



Model Number SD3-449TS-2-BR-E-250-460-60

MFG PN T449TS250U2B

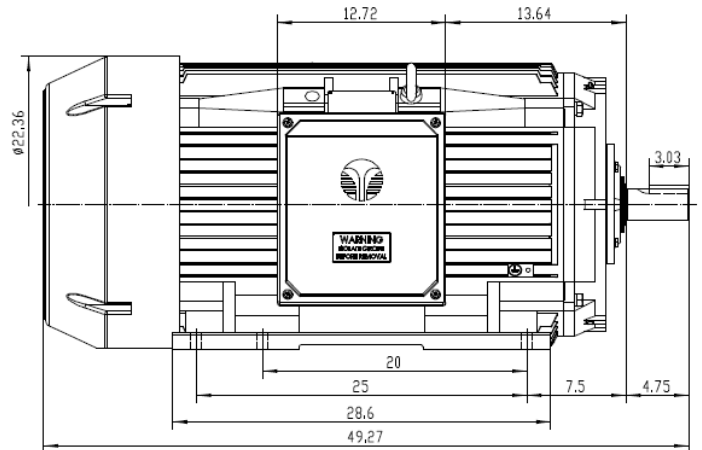
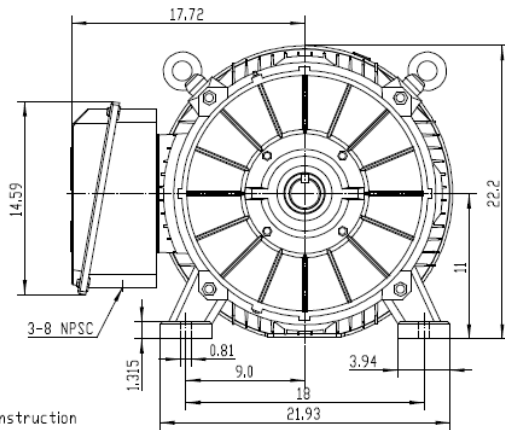
List Price --

All data shown at HIGH voltage setting

Format STD 3 Phase

Electrical Data				General Data	
Rated Motor Output Power	250 HP			Frame Size	449
Rated Motor Speed	3570 r/min			Enclosure	TEFC
Rated Motor Voltage (3 Phase)	460-60 Volts - HZ			Approximate Weight	2254
Rated Motor Current	269 Amps			NEMA Design	B
Service Factor	1.15			IP Rating	56
KVA Code	G			Insulation Class	F
Nominal Efficiency	95.8 %			Tropicalization	YES
Nominal Power Factor	0.91 cosθ			Duty	Cont.
Full Load Torque Ft-Lb	496 Ft-Lb			Cable Entry	1.25
Temp Rise @ Full Load °C	83.4			Feet Removable	YES
Efficiency Level	IE3 - NEMA Premium			Double Drilled	NO
Load Data	RPM	Trq %FL	Current Amps	Rated Ambient (°C)	40
Locked Rotor	-	258	1833	Rated Altitude (M)	1000
Breakdown	-	299	-	Coating	7024 - Graphite Grey
Pull Up	-	144	-	Shaft Grounding	YES
125% of FL	3564	-	334.93	Brake Voltage (DC)	--
75% of FL	3580	-	198.56	Brake Torque (N-M)	--
50% of FL	3587	-	137.26	Mechanical Data	
No Load	3599	-	45.99	Bearing DE Side	6316 C3
Hazardous Location	CL1 Div2 Grp A,B,C,D			Bearing NDE Side	6316 C3
				Moment of Inertia	-- kg.m2
				Noise Level	Per NEMA dB (A)
CT VFD Range		--		Loaded Torque Curves	
				P1 = INPUT POWER (KW), S = Slip (% of Sync RPM), η = Efficiency (%), cosφ = Power Factor	
Certifications	UL	CSA	DOE		
File Numbers	323353	224693	096A		
Wiring Diagram	3PH Single Voltage SD3				

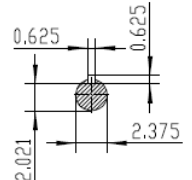
Model Number	SD3-449TS-2-BR-E-250-460-60
MFG PN	T449TS250U2B
List Price	--
Base Frame	SD-449TS-CI-TF



NOTES:

1. All Cast Iron Construction
2. Design B
3. IP55 Labyrinth seals on DE and DDE
4. H Class Insulation System
5. Max Winding Temperature rise 80°C
6. Max bearing temperature rise 45°C for 4 pole and 50°C for 2 pole motors when direct coupled.
7. Regreasable bearings
8. External Grounding provisions
9. Maximum foot flatness deviation .127 mm
10. Conductive Polymer Cooling Fan
11. Diagonally Split Conduit Box rotatable In 90° Increments
12. Lead seals in conduit box
13. Maximum no load sound power 85 dBA(2 pole), Maximum no load sound power 70 dBA(4 pole), Maximum no load sound power 64 dBA(6 pole).
14. No Load Motor Vibration not to exceed
 - a. Radial 60HZ - 2.03mm/s (2,4 pole) and 1.52mm/s (6 pole)
 - b. Axial 60HZ - 1.52mm/s
15. 300 series Stainless Steel hardware
16. Epoxy Coating meeting ASTM B117-97 for 96 h
17. All internal surfaces coated with anti-corrosion coating.
18. Internal Shaft Grounding brush Installed on drive end.
19. No Load test report Included with motor

TECHTOP IEEE 841 SEVERE DUTY ELECTRIC MOTOR	
MODEL: SD3-449TS-2-BR-E-200	TECHTOP.COM
NEMA 300	50 Hz
IP 200	200
RPM 3570	2900
VOLT(3Ø) 480	380
FLA 216	268
SF 1.15	1
KVA CODE G	E
NOM.EFF 0.954	
DATE 08/08/02	DATE 08/08/02
DESIGN B	DESIGN B
FRAME 449TS	FRAME 449TS
ENCL TEFC	ENCL TEFC
IP 55	IP 55
Cont.	Cont.
INS CL H	INS CL H
AMB 40 °C	AMB 40 °C
WEIGHT 1912.3 lbs	WEIGHT 1912.3 lbs
MADE IN CHINA	MADE IN CHINA



TECHTOP ShangHai HIMAK Electrical Machinery CO., LTD		NEMA TEFC 449TS-250HP-2P IEEE-841 UNITS:INCH	
Design	Standard	NO:	CY260.A20.004
Checker	Allow	STEP MARK	1:7 SORT Cast iron Motor
Auditing	Date		