



Model Number SD3-449TC-4-BR-E-250-460-60

MFG PN T449T250U4B

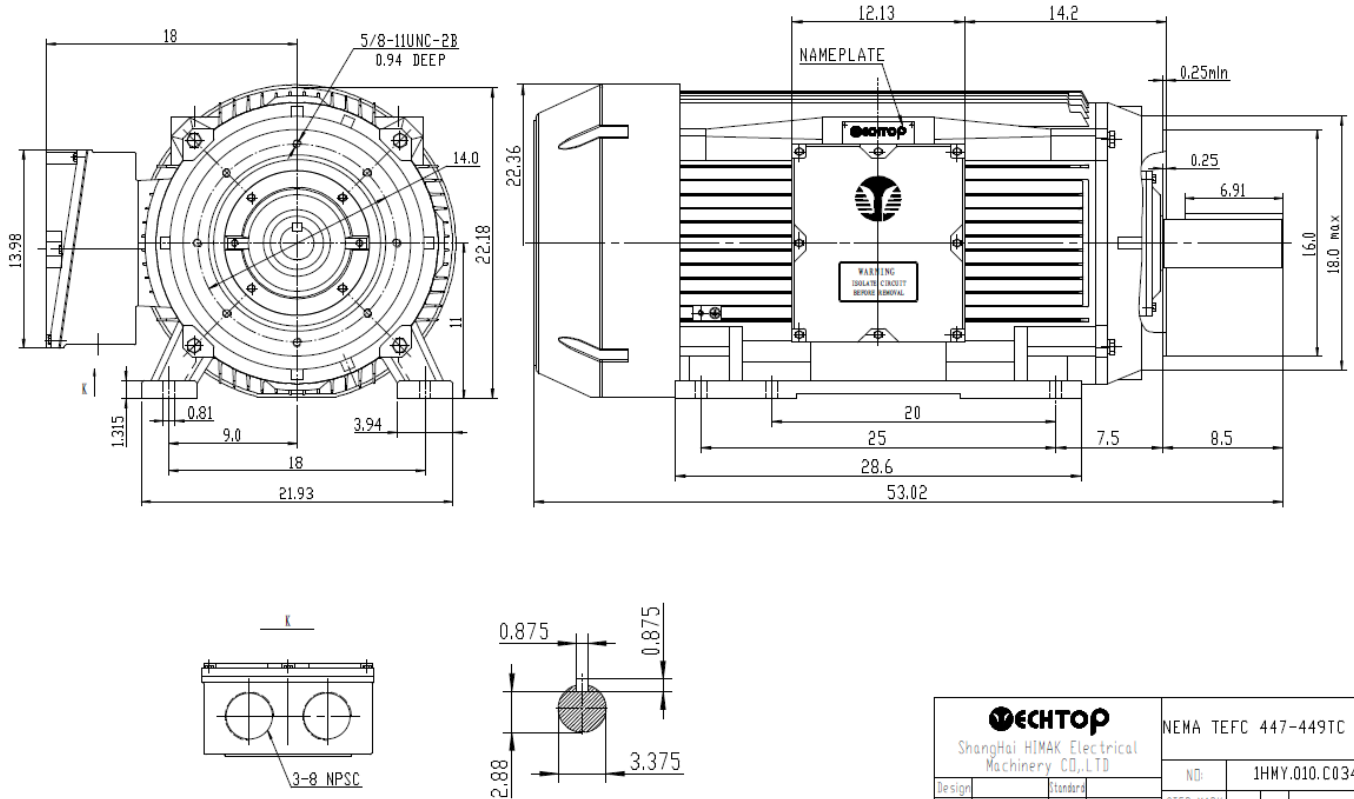
List Price --

All data shown at HIGH voltage setting

Format STD 3 Phase

Electrical Data				General Data	
Rated Motor Output Power	250 HP			Frame Size	449
Rated Motor Speed	1785 r/min			Enclosure	TEFC
Rated Motor Voltage (3 Phase)	460-60 Volts - HZ			Approximate Weight	2320
Rated Motor Current	273 Amps			NEMA Design	B
Service Factor	1.15			IP Rating	56
KVA Code	G			Insulation Class	F
Nominal Efficiency	96.2 %			Tropicalization	YES
Nominal Power Factor	0.89 cosθ			Duty	Cont.
Full Load Torque Ft-Lb	997 Ft-Lb			Cable Entry	1.25
Temp Rise @ Full Load °C	72.2			Feet Removable	YES
Efficiency Level	IE3 - NEMA Premium			Double Drilled	NO
Load Data	RPM	Trq %FL	Current Amps	Rated Ambient (°C)	40
Locked Rotor	-	253	1850	Rated Altitude (M)	1000
Breakdown	-	284	-	Coating	7024 - Graphite Grey
Pull Up	-	353	-	Shaft Grounding	YES
125% of FL	343.13	-	--	Brake Voltage (DC)	--
75% of FL	1791	-	206.24	Brake Torque (N-M)	--
50% of FL	1794	-	146.57	Mechanical Data	
No Load	--	-	67.41	Bearing DE Side	6319 C3
Hazardous Location	CL1 Div2 Grp A,B,C,D			Bearing NDE Side	6319 C3
				Moment of Inertia	-- kg.m2
				Noise Level	Per NEMA dB (A)
CT VFD Range		--		Loaded Torque Curves	
				P1 = INPUT POWER (KW), S = Slip (% of Sync RPM), η = Efficiency (%), cosφ = Power Factor	
Certifications	UL	CSA	DOE		
File Numbers	323353	224693	096A		
Wiring Diagram	3PH Single Voltage SD3				

Model Number	SD3-449TC-4-BR-E-250-460-60
MFG PN	T449T250U4B
List Price	--
Base Frame	SD-449TC-CI-TF



TECHTOP		NEMA TEFC 447-449TC CFC	
Shanghai HIMAK Electrical Machinery CO.,LTD		NO:	1HWY.010.C034
Design	Standard	STEP MARK	14.5 SDRT Cast Iron Motor
Checker	Allow		
Builder	Date		