



Model Number SD3-447TC-4-BR-E-200-460-60

MFG PN T447T200U4B

List Price --

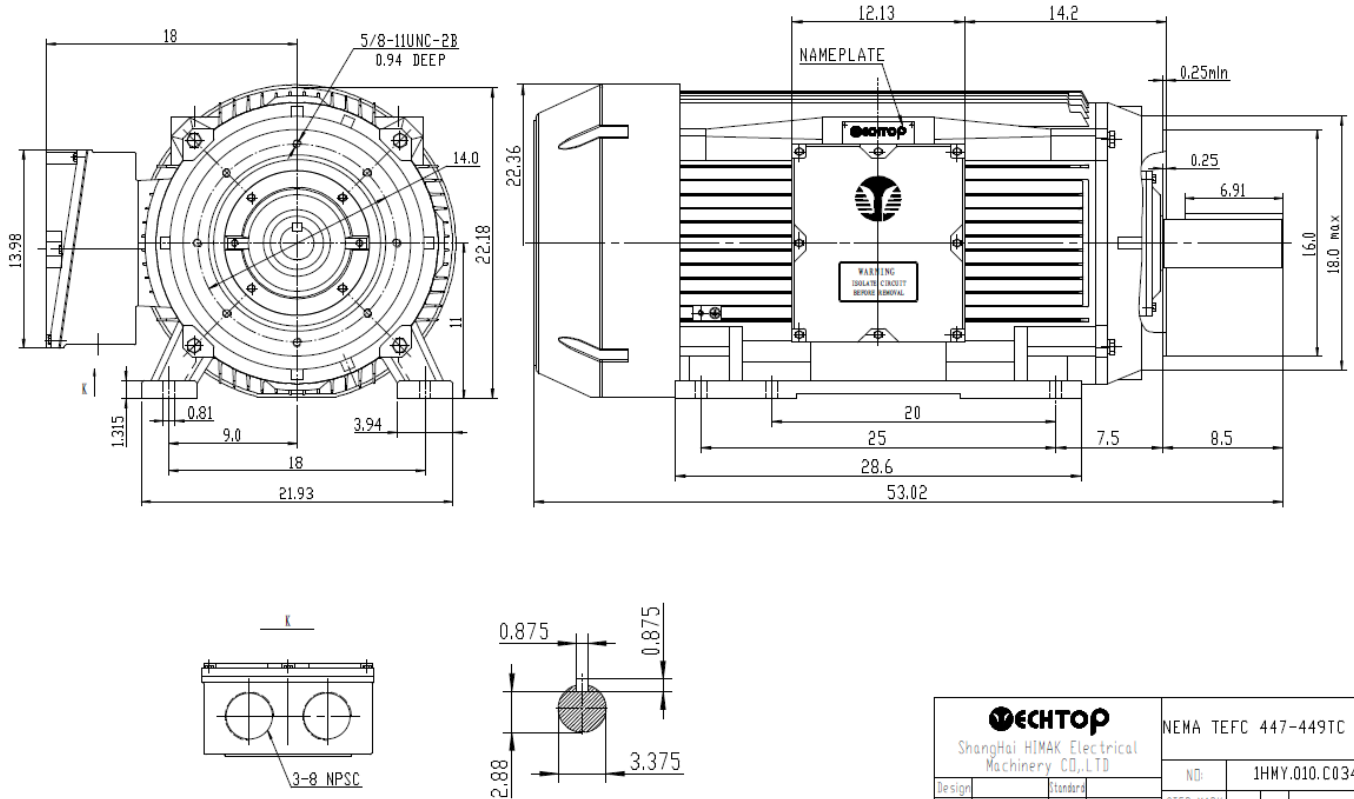
All data shown at HIGH voltage setting

Format STD 3 Phase

| Electrical Data | | | | General Data | |
|-------------------------------|------------------------|---------|--------------|--|----------------------|
| Rated Motor Output Power | 200 HP | | | Frame Size | 447 |
| Rated Motor Speed | 1785 r/min | | | Enclosure | TEFC |
| Rated Motor Voltage (3 Phase) | 460-60 Volts - HZ | | | Approximate Weight | 1992.8 |
| Rated Motor Current | 219 Amps | | | NEMA Design | B |
| Service Factor | 1.15 | | | IP Rating | 56 |
| KVA Code | G | | | Insulation Class | F |
| Nominal Efficiency | 96.2 % | | | Tropicalization | YES |
| Nominal Power Factor | 0.89 cosθ | | | Duty | Cont. |
| Full Load Torque Ft-Lb | 800.45 Ft-Lb | | | Cable Entry | 1.25 |
| Temp Rise @ Full Load °C | 79.4 | | | Feet Removable | YES |
| Efficiency Level | IE3 - NEMA Premium | | | Double Drilled | NO |
| Load Data | RPM | Trq %FL | Current Amps | Rated Ambient (°C) | 40 |
| Locked Rotor | - | 224 | 1538 | Rated Altitude (M) | 1000 |
| Breakdown | - | 195 | - | Coating | 7024 - Graphite Grey |
| Pull Up | - | 111 | - | Shaft Grounding | YES |
| 125% of FL | 1783 | - | 275.25 | Brake Voltage (DC) | -- |
| 75% of FL | 1791 | - | 164.38 | Brake Torque (N-M) | -- |
| 50% of FL | 1794 | - | 116.02 | Mechanical Data | |
| No Load | -- | - | 51.04 | Bearing DE Side | 6319 C3 |
| Hazardous Location | CL1 Div2 Grp A,B,C,D | | | Bearing NDE Side | 6319 C3 |
| | | | | Moment of Inertia | -- kg.m2 |
| | | | | Noise Level | Per NEMA dB (A) |
| CT VFD Range | | -- | | Loaded Torque Curves | |
| | | | | P1 = INPUT POWER (KW), S = Slip (% of Sync RPM), η = Efficiency (%), cosφ = Power Factor | |
| Certifications | UL | CSA | DOE | | |
| File Numbers | 323353 | 224693 | 096A | | |
| Wiring Diagram | 3PH Single Voltage SD3 | | | | |
| | | | | | |



| | |
|--------------|-----------------------------|
| Model Number | SD3-447TC-4-BR-E-200-460-60 |
| MFG PN | T447T200U4B |
| List Price | -- |
| Base Frame | SD-447TC-CI-TF |



| | | | |
|---|----------|-------------------------|---------------------------|
| TECHTOP | | NEMA TEFC 447-449TC CFC | |
| Shanghai HIMAK Electrical Machinery CO.,LTD | | NO: | 1HWY.010.C034 |
| Design | Standard | STEP MARK | 14.5 SDRT Cast Iron Motor |
| Checker | Allow | | |
| Builder | Date | | |

Techtop Industries -2815 Colonnades Court - Peachtree Corners, GA 30071 - Phone: (678) 436-5540