



Model Number SD3-445TS-2-BR-E-150-460-60

MFG PN T445TS150U2B

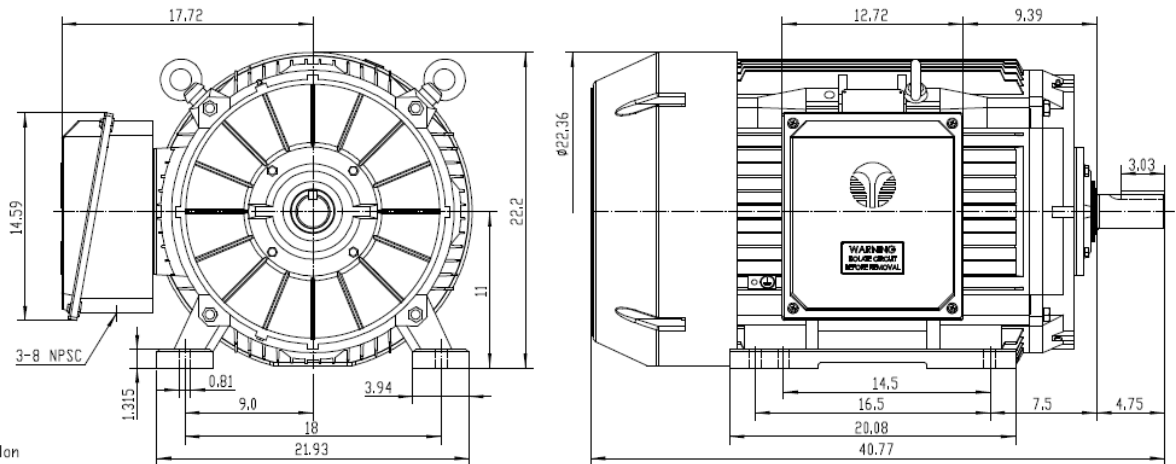
List Price --

All data shown at HIGH voltage setting

Format STD 3 Phase

| Electrical Data | | | | General Data | |
|-------------------------------|------------------------|---------|--------------|--|----------------------|
| Rated Motor Output Power | 150 HP | | | Frame Size | 445 |
| Rated Motor Speed | 3565 r/min | | | Enclosure | TEFC |
| Rated Motor Voltage (3 Phase) | 460-60 Volts - HZ | | | Approximate Weight | 1591 |
| Rated Motor Current | 162 Amps | | | NEMA Design | B |
| Service Factor | 1.15 | | | IP Rating | 56 |
| KVA Code | G | | | Insulation Class | F |
| Nominal Efficiency | 95 % | | | Tropicalization | YES |
| Nominal Power Factor | 0.91 cosθ | | | Duty | Cont. |
| Full Load Torque Ft-Lb | 291.6 Ft-Lb | | | Cable Entry | 1.25 |
| Temp Rise @ Full Load °C | 71.4 | | | Feet Removable | YES |
| Efficiency Level | IE3 - NEMA Premium | | | Double Drilled | NO |
| Load Data | RPM | Trq %FL | Current Amps | Rated Ambient (°C) | 40 |
| Locked Rotor | - | 224 | 1084 | Rated Altitude (M) | 1000 |
| Breakdown | - | 271 | - | Coating | 7024 - Graphite Grey |
| Pull Up | - | 66 | - | Shaft Grounding | YES |
| 125% of FL | 3565 | - | 182.54 | Brake Voltage (DC) | -- |
| 75% of FL | 3577 | - | 118.46 | Brake Torque (N-M) | -- |
| 50% of FL | 3585 | - | 82.26 | Mechanical Data | |
| No Load | 3599 | - | 29.38 | Bearing DE Side | 6316 C3 |
| Hazardous Location | CL1 Div2 Grp A,B,C,D | | | Bearing NDE Side | 6316 C3 |
| | | | | Moment of Inertia | -- kg.m2 |
| | | | | Noise Level | Per NEMA dB (A) |
| CT VFD Range | | -- | | Loaded Torque Curves | |
| | | | | P1 = INPUT POWER (KW), S = Slip (% of Sync RPM), η = Efficiency (%), cosφ = Power Factor | |
| Certifications | UL | CSA | DOE | | |
| File Numbers | 323353 | 224693 | 096A | | |
| Wiring Diagram | 3PH Single Voltage SD3 | | | | |
| | | | | | |

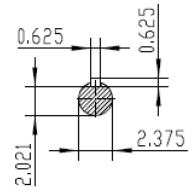
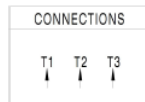
| | |
|--------------|-----------------------------|
| Model Number | SD3-445TS-2-BR-E-150-460-60 |
| MFG PN | T445TS150U2B |
| List Price | -- |
| Base Frame | SD-445TS-CI-TF |



NOTES:

- All Cast Iron Construction
- Design B
- IP55 Labyrinth seals on DE and ODE
- H Class Insulation System
- Max Winding Temperature rise 80°C
- Max bearing temperature rise 45°C for 4 pole and 50°C for 2 pole motors when direct coupled.
- Regreasable bearings
- External Grounding provisions
- Maximum foot flatness deviation .127 mm
- Conductive Polymer Cooling Fan
- Diagonally Split Conduit Box rotatable in 90° Increments
- Lead seals in conduit box
- Maximum no load sound power 85 dBA(2 pole), Maximum no load sound power 70 dBA(4 pole), Maximum no load sound power 64 dBA(6 pole).
- No Load Motor Vibration not to exceed
a.Radial 60HZ - 2.03mm/s (2,4 pole) and 1.52mm/s (6 pole)
b.Axial 60HZ - 1.52mm/s
- 300 series Stainless Steel hardware
- Epoxy Coating meeting ASTM B117-97 for 96 h
- All internal surfaces coated with anti-corrosion coating.
- Internal Shaft Grounding brush installed on drive end.
- No Load test report included with motor

| | |
|--|---------------------|
| TECHTOP IEEE 841 SEVERE DUTY ELECTRIC MOTOR | |
| MODEL SD3-445TS-2-BR-E-150 | TECHTOP.COM |
| HP 150 | MFG PN T445TS150U2B |
| RPM 3600 | SER # 1803102053 |
| VOLT(Ø) 460 | DATE 08/04/09 |
| FLA 162 | DESIGN B |
| SF 1.15 | FRAME 445TS |
| KVA CODE G | ENCL TEFC |
| NOM EFF 0.950 | IP 55 |
| ARC ARRESTOR | DUTY Cont. |
| WEIGHT 1587 lbs | INS Cl H |
| MADE IN CHINA | AMB 40 |



| | | | |
|---|----------|--------------------------|----------------------------|
| ShangHai HIMAK Electrical Machinery CO., LTD | | NEMA TEFC 445TS-150HP-2P | |
| | | IEEE-841 UNITS:INCH | |
| Design | Standard | NO: | CY260.A20.002 |
| Checker | Allow | STEP MARK | 1:6.5 SORT Cast iron Motor |
| Auditing | Date | | |