



Model Number SD3-444T-4-BR-E-125-460-60

MFG PN T444T125U4B

List Price --

All data shown at HIGH voltage setting

Format STD 3 Phase

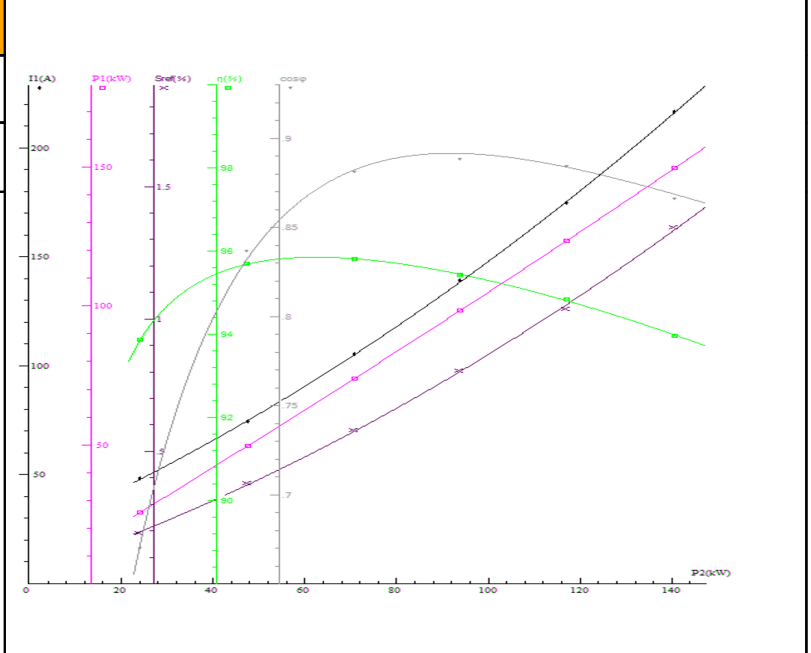
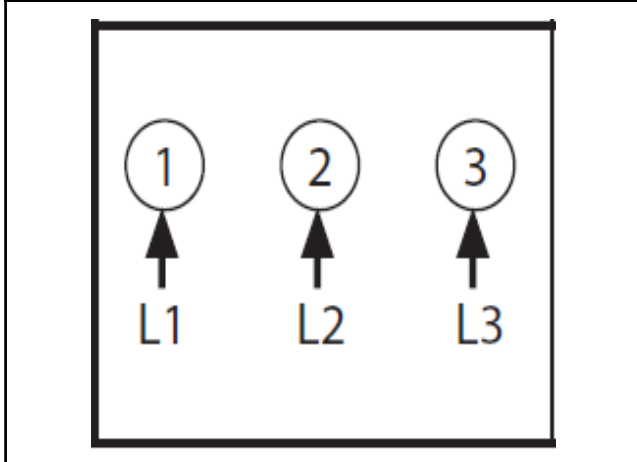
Electrical Data		General Data	
Rated Motor Output Power	125 HP	Frame Size	444
Rated Motor Speed	1785 r/min	Enclosure	TEFC
Rated Motor Voltage (3 Phase)	460-60 Volts - HZ	Approximate Weight	1390.8
Rated Motor Current	138 Amps	NEMA Design	B
Service Factor	1.15	IP Rating	56
KVA Code	G	Insulation Class	F
Nominal Efficiency	95.4 %	Tropicalization	YES
Nominal Power Factor	0.89 cosθ	Duty	Cont.
Full Load Torque Ft-Lb	495 Ft-Lb	Cable Entry	1.25
Temp Rise @ Full Load °C	72.5	Feet Removable	YES
Efficiency Level	IE3 - NEMA Premium	Double Drilled	NO

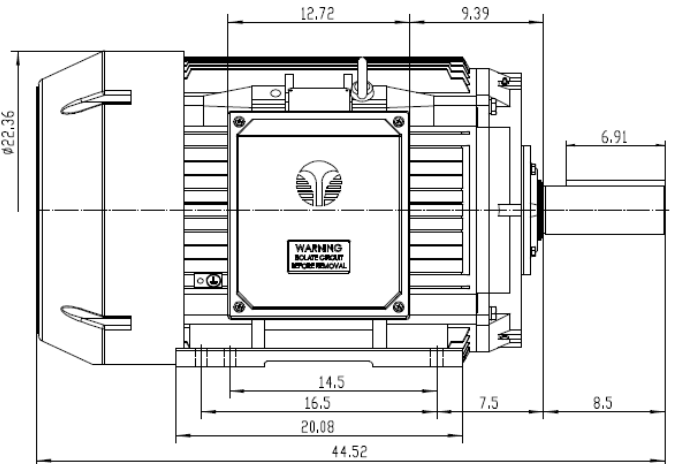
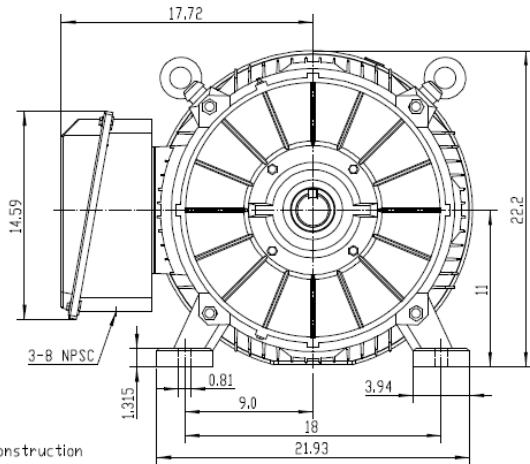
Load Data	RPM	Trq %FL	Current Amps	Mechanical Data	
Locked Rotor	-	197	922	Bearing DE Side	6319 C3
Breakdown	-	185	-	Bearing NDE Side	6319 C3
Pull Up	-	89	-	Moment of Inertia	-- kg.m2
125% of FL	1781	-	174.02	Noise Level	Per NEMA dB (A)
75% of FL	1790	-	103.68		
50% of FL	1793	-	73.63		
No Load	--	-	33.66		

Hazardous Location	CL1 Div2 Grp A,B,C,D			Rated Ambient (°C)	40
--------------------	----------------------	--	--	--------------------	----

CT VFD Range	--	Loaded Torque Curves	
$P_1 = \text{INPUT POWER (KW)}$, $S = \text{Slip (\% of Sync RPM)}$, $\eta = \text{Efficiency (\%)}$, $\cos\phi = \text{Power Factor}$			

Certifications	UL	CSA	DOE
File Numbers	323353	224693	096A
Wiring Diagram	3PH Single Voltage SD3		

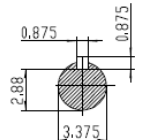




NOTES:

1. All Cast Iron Construction
2. Design B
3. IP55 Labyrinth seals on DE and ODE
4. H Class Insulation System
5. Max Winding Temperature rise 80°C
6. Max bearing temperature rise 45°C for 4 pole and 50°C for 2 pole motors when direct coupled.
7. Regreasable bearings
8. External Grounding provisions
9. Maximum foot flatness deviation .127 mm
10. Conductive Polymer Cooling Fan
11. Diagonally Split Conduit Box rotatable in 90° Increments
12. Lead seals in conduit box
13. Maximum no load sound power 85 dBA(2 pole),
Maximum no load sound power 70 dBA(4 pole),
Maximum no load sound power 64 dBA(6 pole).
14. No Load Motor Vibration not to exceed
a. Radial 60HZ - 2.03mm/s (2,4 pole) and 1.52mm/s (6 pole)
b. Axial 60HZ - 1.52mm/s
15. 300 series Stainless Steel hardware
16. Epoxy Coating meeting ASTM B117-97 for 96 h
17. All internal surfaces coated with anti-corrosion coating.
18. Internal Shaft Grounding brush installed on drive end.
19. No Load test report included with motor

TECHTOP IEEE 841 SEVERE DUTY ELECTRIC MOTOR	
MODEL SD3-444T-4-RR-E-100	TECHTOP.COM
NEMA HP 100	MFG PN T 444T100UBB
50 Hz 100	SER # 1603102B49
60 Hz 95.5	DATE 0909202
RPM 1150	DESIGN B
VOLT(3Ø) 460 3Ø	CE
FLA 119 142	FRAME 444T
SF 1.15 1	ENCL TEFC
KVA CODE G F	IP 55
NOM EFF 0.950	DUTY Cont.
ARC ARRESTOR	INS CL H
VFD 15:1 CT-1.0 SF	AMB 40 C
	WEIGHT 1643.3 lbs
	MADE IN CHINA



 ShangHai HIMAK Electrical Machinery CO., LTD		NEMA TEFC 444T-100HP-6P	
		IEEE-841 UNITS:INCH	
Design	Standard	NO:	CY260.A20.010
Checker	Allow	STEP MARK	1:6.5 SORT Cast iron Motor
Auditing	Date		