



Model Number

SD3-405T-6-RR-E-75-460-60

MFG PN

T405T75U6B

List Price

--

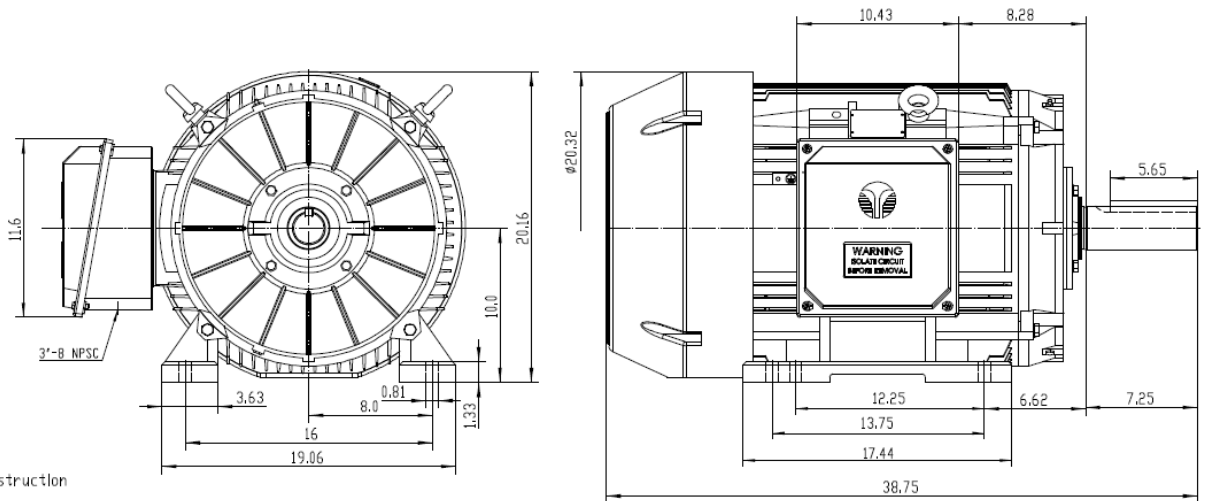
All data shown at HIGH voltage setting

Format STD 3 Phase

Electrical Data				General Data	
Rated Motor Output Power	75 HP			Frame Size	405
Rated Motor Speed	1185 r/min			Enclosure	TEFC
Rated Motor Voltage (3 Phase)	460-60 Volts - HZ			Approximate Weight	1101
Rated Motor Current	90 Amps			NEMA Design	B
Service Factor	1.15			IP Rating	56
KVA Code	G			Insulation Class	F
Nominal Efficiency	94.5 %			Tropicalization	YES
Nominal Power Factor	0.83 cosθ			Duty	Cont.
Full Load Torque Ft-Lb	442 Ft-Lb			Cable Entry	1.25
Temp Rise @ Full Load °C	63.9			Feet Removable	YES
Efficiency Level	IE3 - NEMA Premium			Double Drilled	NO
Load Data	RPM	Trq %FL	Current Amps	Rated Ambient (°C)	40
Locked Rotor	-	223	545	Rated Altitude (M)	1000
Breakdown	-	218	-	Coating	7024 - Graphite Grey
Pull Up	-	106	-	Shaft Grounding	YES
125% of FL	1185	-	110.26	Brake Voltage (DC)	--
75% of FL	1192	-	66.45	Brake Torque (N-M)	--
50% of FL	1195	-	48.59	Mechanical Data	
No Load	--	-	26.94	Bearing DE Side	6316 C3
Hazardous Location	CL1 Div2 Grp A,B,C,D			Bearing NDE Side	6314 C3
				Moment of Inertia	-- kg.m2
				Noise Level	Per NEMA dB (A)
CT VFD Range		--		Loaded Torque Curves	
				P1 = INPUT POWER (KW), S = Slip (% of Sync RPM), η = Efficiency (%), cosφ = Power Factor	
Certifications	UL	CSA	DOE		
File Numbers	323353	224693	096A		
Wiring Diagram	3PH Single Voltage SD3				



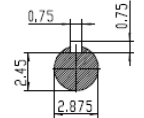
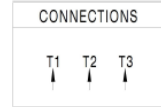
Model Number	SD3-405T-6-RR-E-75-460-60
MFG PN	T405T75U6B
List Price	--
Base Frame	SD-405T-CI-TF



NOTES:

1. All Cast Iron Construction
2. Design B
3. IP55 Labyrinth seals on DE and ODE
4. H Class Insulation System
5. Max Winding Temperature rise 80°C
6. Max bearing temperature rise 45°C for 4 pole and 50°C for 2 pole motors when direct coupled.
7. Regreasable bearings
8. External Grounding provisions
9. Maximum foot flatness deviation .127 mm
10. Conductive Polymer Cooling Fan
11. Diagonally Split Conduit Box rotatable In 90° Increments
12. Lead seals in conduit box
13. Maximum no load sound power 85 dBA(2 pole),
Maximum no load sound power 70 dBA(4 pole),
Maximum no load sound power 64 dBA(6 pole).
14. No Load Motor Vibration not to exceed
a. Radial 60HZ - 2.03mm/s (2,4 pole) and 1.52mm/s (6 pole)
b. Axial 60HZ - 1.52mm/s
15. 300 series Stainless Steel hardware
16. Epoxy Coating meeting ASTM B117-97 for 96 h
17. All internal surfaces coated with anti-corrosion coating.
18. Internal Shaft Grounding brush Installed on drive end.
19. No Load test report included with motor

TECHTOP IEEE 841		SEVERE DUTY ELECTRIC MOTOR	
MODEL SD3-405T-6-RR-E-75		TECHTOP.COM	
NEMA 75	75	SER # T405T75U6B	
HP 1185	500	DATE 09/20/20	
VOLT(S) 460	380	DESIGN B	CE
FLA 90.0	108	FRAME 405T	CCCOSA
SF 1.15	1	ENCL TEFC	
KVA CODE G	E	IP 55	
NOM EFF 0.945		DUTY Cont	
		INS CL H	
		AMB 40 °C	
		WEIGHT 105.2 lbs	
		MADE IN CHINA	



 Shanghai HIMAK Electrical Machinery CO., LTD		NEMA TEFC 405T-75HP-6P	
		IEEE-841 UNITS:INCH	
Design	Standard	NO:	CY259.A20.004
Checker	Allow	STEP MARK	1:6 SORT Cast iron Motor
Auditing	Date		