



**Model Number** SD3-405T-4-RR-E-100-460-60

**MFG PN** T405T100U4B

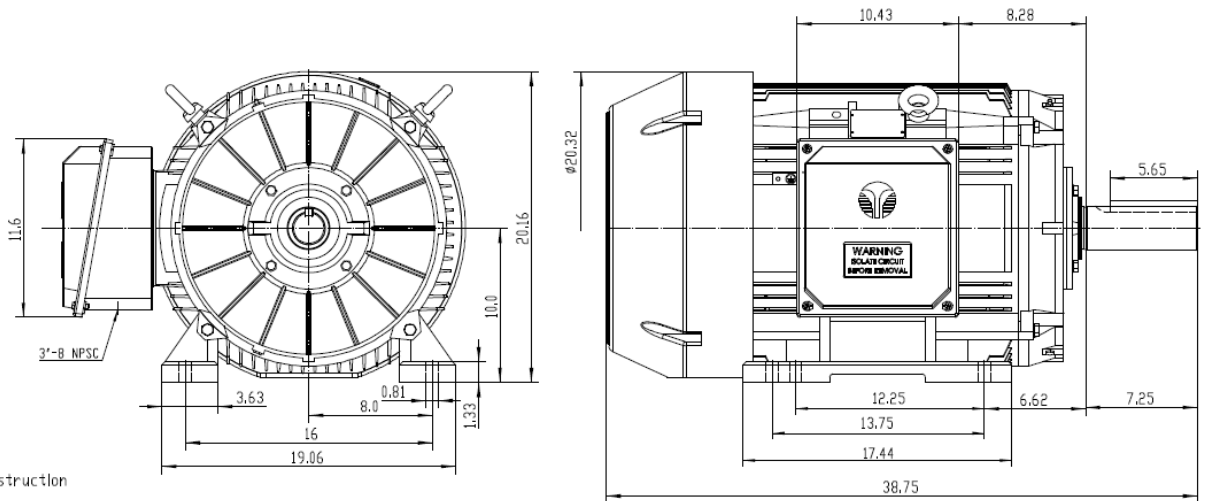
**List Price** --

All data shown at HIGH voltage setting

Format STD 3 Phase

Electrical Data				General Data	
Rated Motor Output Power	100 HP			Frame Size	405
Rated Motor Speed	1780 r/min			Enclosure	TEFC
Rated Motor Voltage (3 Phase)	460-60 Volts - HZ			Approximate Weight	1122.2
Rated Motor Current	117 Amps			NEMA Design	B
Service Factor	1.15			IP Rating	56
KVA Code	G			Insulation Class	F
Nominal Efficiency	95.4 %			Tropicalization	YES
Nominal Power Factor	0.84 cosθ			Duty	Cont.
Full Load Torque Ft-Lb	401 Ft-Lb			Cable Entry	1.25
Temp Rise @ Full Load °C	68.4			Feet Removable	YES
Efficiency Level	IE3 - NEMA Premium			Double Drilled	NO
Load Data	RPM	Trq %FL	Current Amps	Rated Ambient (°C)	40
Locked Rotor	-	243	750	Rated Altitude (M)	1000
Breakdown	-	227	-	Coating	7024 - Graphite Grey
Pull Up	-	130	-	Shaft Grounding	YES
125% of FL	1776	-	146.4	Brake Voltage (DC)	--
75% of FL	1787	-	88.77	Brake Torque (N-M)	--
50% of FL	1792	-	64.51	Mechanical Data	
No Load	1796	-	33.91	Bearing DE Side	6316 C3
Hazardous Location	CL1 Div2 Grp A,B,C,D			Bearing NDE Side	6314 C3
				Moment of Inertia	-- kg.m2
				Noise Level	Per NEMA dB (A)
CT VFD Range		--		Loaded Torque Curves	
				<b>P1 = INPUT POWER (KW), S = Slip (% of Sync RPM), η = Efficiency (%), cosφ = Power Factor</b>	
Certifications	UL	CSA	DOE		
File Numbers	323353	224693	096A		
Wiring Diagram	3PH Single Voltage SD3				

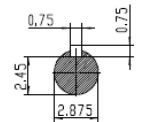
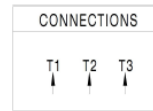
Model Number	SD3-405T-4-RR-E-100-460-60
MFG PN	T405T100U4B
List Price	--
Base Frame	SD-405T-CI-TF



**NOTES:**

- All Cast Iron Construction
- Design B
- IP55 Labyrinth seals on DE and ODE
- H Class Insulation System
- Max Winding Temperature rise 80°C
- Max bearing temperature rise 45°C for 4 pole and 50°C for 2 pole motors when direct coupled.
- Regreasable bearings
- External Grounding provisions
- Maximum foot flatness deviation .127 mm
- Conductive Polymer Cooling Fan
- Diagonally Split Conduit Box rotatable In 90° Increments
- Lead seals in conduit box
- Maximum no load sound power 85 dBA(2 pole),  
Maximum no load sound power 70 dBA(4 pole),  
Maximum no load sound power 64 dBA(6 pole).
- No Load Motor Vibration not to exceed  
a.Radial 60HZ - 2.03mm/s (2,4 pole) and 1.52mm/s (6 pole)  
b.Axial 60HZ - 1.52mm/s
- 300 series Stainless Steel hardware
- Epoxy Coating meeting ASTM B117-97 for 96 h
- All internal surfaces coated with anti-corrosion coating.
- Internal Shaft Grounding brush Installed on drive end.
- No Load test report included with motor

<b>TECHTOP IEEE 841</b>		SEVERE DUTY ELECTRIC MOTOR	
MODEL: SD3-405T-6-RR-E-75		TECHTOP.COM	
NEMA 75	75	SER #	T 405T100U4B
HP 1185	500	DATE	09/20/20
VOLT(S) 460	380	DESIGN	B
FLA 90.0	108	FRAME	405T
SF 1.15	1	ENCL	TEFC
KVA CODE G	E	IP	55
NOM EFF 0.945		DUTY	Cont
		INS CL	H
		AMB	40 °C
		WEIGHT	105.2 Kg
			MADE IN CHINA



 <b>ShangHai HIMAK Electrical Machinery CO., LTD</b>		NEMA TEFC 405T-75HP-6P	
		IEEE-841 UNITS:INCH	
Design	Standard	NO:	CY259.A20.004
Checker	Allow	STEP MARK	1:6 SORT
Auditing	Date		Cast iron Motor