



Model Number SD3-405T-4-BR-E-100-460-60

MFG PN T405T100U4B

List Price --

All data shown at HIGH voltage setting

Format STD 3 Phase

Electrical Data		General Data	
Rated Motor Output Power	100 HP	Frame Size	405
Rated Motor Speed	1780 r/min	Enclosure	TEFC
Rated Motor Voltage (3 Phase)	460-60 Volts - HZ	Approximate Weight	1122.2
Rated Motor Current	117 Amps	NEMA Design	B
Service Factor	1.15	IP Rating	56
KVA Code	G	Insulation Class	F
Nominal Efficiency	95.4 %	Tropicalization	YES
Nominal Power Factor	0.84 cosθ	Duty	Cont.
Full Load Torque Ft-Lb	401 Ft-Lb	Cable Entry	1.25
Temp Rise @ Full Load °C	68.4	Feet Removable	YES
Efficiency Level	IE3 - NEMA Premium	Double Drilled	NO

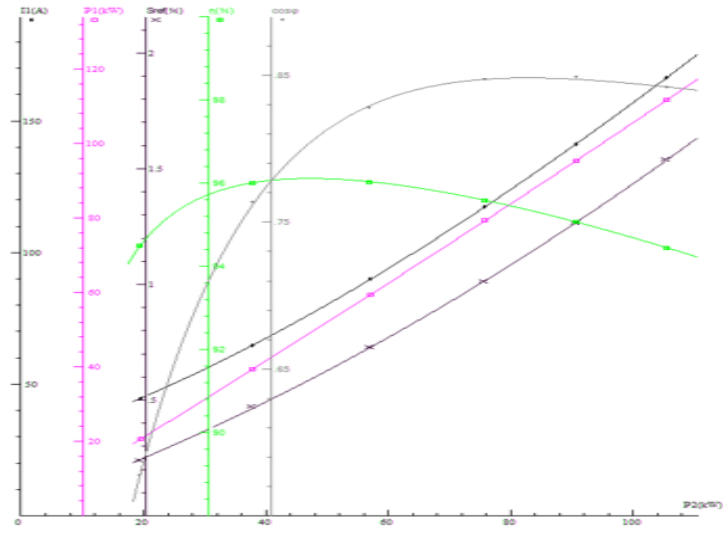
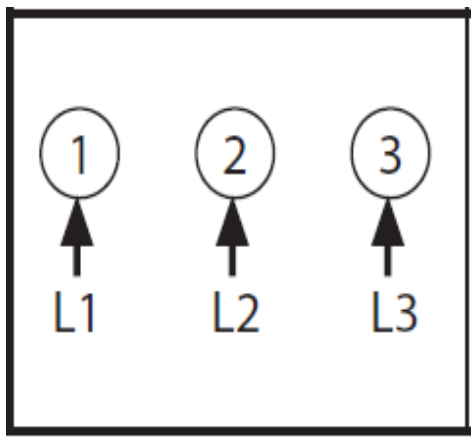
Load Data	RPM	Trq %FL	Current Amps	Mechanical Data	
Locked Rotor	-	243	750	Rated Ambient (°C)	40
Breakdown	-	227	-	Rated Altitude (M)	1000
Pull Up	-	130	-	Coating	7024 - Graphite Grey
125% of FL	1776	-	146.4	Shaft Grounding	YES
75% of FL	1787	-	88.77	Brake Voltage (DC)	--
50% of FL	1792	-	64.51	Brake Torque (N-M)	--
No Load	1796	-	33.91		

Hazardous Location	CL1 Div2 Grp A,B,C,D		Bearing DE Side	6316 C3
			Bearing NDE Side	6314 C3
			Moment of Inertia	-- kg.m2
			Noise Level	Per NEMA dB (A)

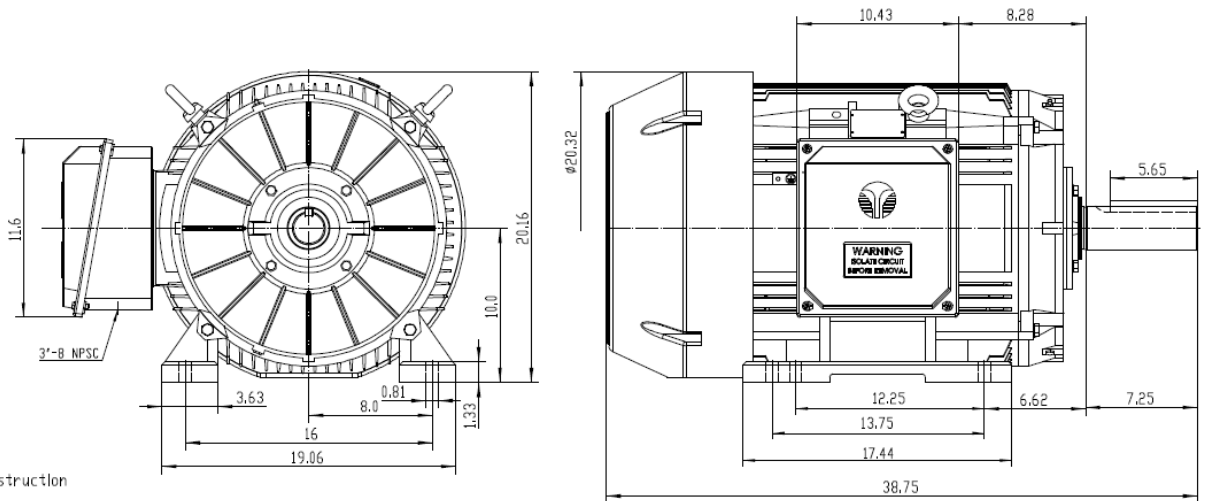
CT VFD Range	--	Loaded Torque Curves	
		P1 = INPUT POWER (KW), S = Slip (% of Sync RPM), η = Efficiency (%), cosφ = Power Factor	

Certifications	UL	CSA	DOE
File Numbers	323353	224693	096A

Wiring Diagram 3PH Single Voltage SD3



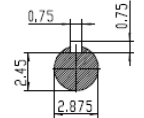
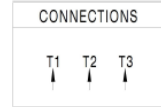
Model Number	SD3-405T-4-BR-E-100-460-60
MFG PN	T405T100U4B
List Price	--
Base Frame	SD-405T-CI-TF



NOTES:

- All Cast Iron Construction
- Design B
- IP55 Labyrinth seals on DE and ODE
- H Class Insulation System
- Max Winding Temperature rise 80°C
- Max bearing temperature rise 45°C for 4 pole and 50°C for 2 pole motors when direct coupled.
- Regreasable bearings
- External Grounding provisions
- Maximum foot flatness deviation .127 mm
- Conductive Polymer Cooling Fan
- Diagonally Split Conduit Box rotatable In 90° Increments
- Lead seals in conduit box
- Maximum no load sound power 85 dBA(2 pole), Maximum no load sound power 70 dBA(4 pole), Maximum no load sound power 64 dBA(6 pole).
- No Load Motor Vibration not to exceed
 - Radial 60HZ - 2.03mm/s (2,4 pole) and 1.52mm/s (6 pole)
 - Axial 60HZ - 1.52mm/s
- 300 series Stainless Steel hardware
- Epoxy Coating meeting ASTM B117-97 for 96 h
- All internal surfaces coated with anti-corrosion coating.
- Internal Shaft Grounding brush Installed on drive end.
- No Load test report included with motor

TECHTOP IEEE 841		SEVERE DUTY ELECTRIC MOTOR	
MODEL SD3-405T-6-RR-E-75		TECHTOP.COM	
NEMA 75	75	SER # T405T100U4B	
HP 1185	500	DATE 09/20/20	
VOLT(S) 460	380	DESIGN B	CE
FLA 90.0	108	FRAME 405T	CCCPSA
SF 1.15	1	ENCL TEFC	
KVA CODE G	E	IP 55	
NOM EFF 0.945		DUTY Cont	
		INS CL H	
		AMB All °C	
		WEIGHT 105.3 E Box	
		MADE IN CHINA	



 Shanghai HIMAK Electrical Machinery CO., LTD		NEMA TEFC 405T-75HP-6P	
		IEEE-841 UNITS:INCH	
Design	Standard	NO:	CY259.A20.004
Checker	Allow	STEP MARK	1:6 SORT
Auditing	Date		Cast iron Motor