



Model Number

SD3-404T-6-RR-E-60-460-60

MFG PN

T404T60U6B

List Price

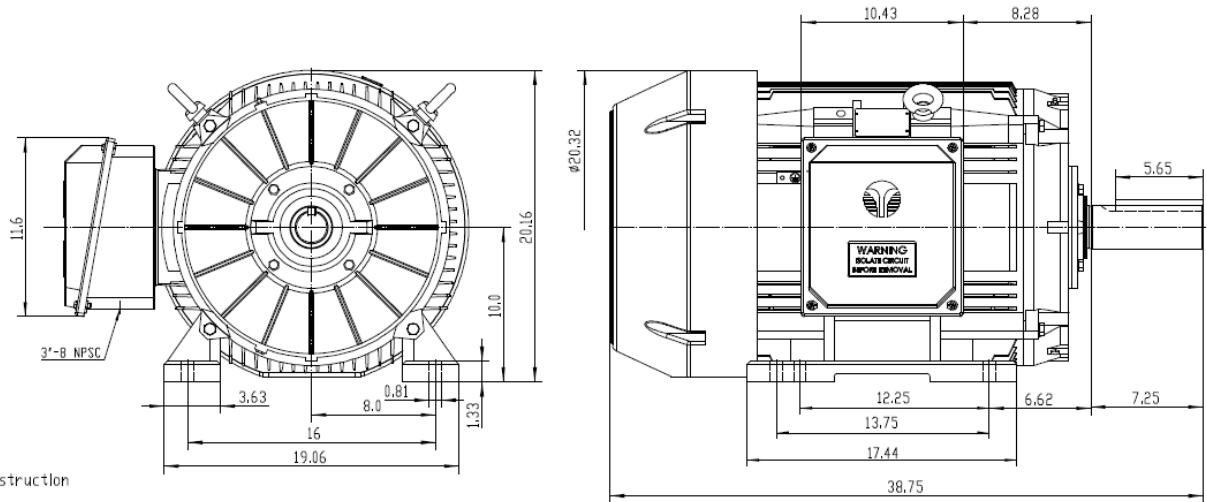
--

All data shown at HIGH voltage setting

Format STD 3 Phase

Electrical Data				General Data	
Rated Motor Output Power	60 HP			Frame Size	404
Rated Motor Speed	1185 r/min			Enclosure	TEFC
Rated Motor Voltage (3 Phase)	460-60 Volts - HZ			Approximate Weight	1003
Rated Motor Current	72 Amps			NEMA Design	B
Service Factor	1.15			IP Rating	56
KVA Code	G			Insulation Class	F
Nominal Efficiency	94.5 %			Tropicalization	YES
Nominal Power Factor	0.83 cosθ			Duty	Cont.
Full Load Torque Ft-Lb	361 Ft-Lb			Cable Entry	1.25
Temp Rise @ Full Load °C	48.8			Feet Removable	YES
Efficiency Level	IE3 - NEMA Premium			Double Drilled	NO
Load Data	RPM	Trq %FL	Current Amps	Rated Ambient (°C)	40
Locked Rotor	-	208	436	Rated Altitude (M)	1000
Breakdown	-	212	-	Coating	7024 - Graphite Grey
Pull Up	-	111	-	Shaft Grounding	YES
125% of FL	1186	-	90.84	Brake Voltage (DC)	--
75% of FL	1193	-	55.26	Brake Torque (N-M)	--
50% of FL	1195	-	40.92	Mechanical Data	
No Load	--	-	24.32	Bearing DE Side	6316 C3
Hazardous Location	CL1 Div2 Grp A,B,C,D			Bearing NDE Side	6314 C3
				Moment of Inertia	-- kg.m2
				Noise Level	Per NEMA dB (A)
CT VFD Range		--		Loaded Torque Curves	
				<b>P1 = INPUT POWER (KW), S = Slip (% of Sync RPM), η = Efficiency (%), cosφ = Power Factor</b>	
Certifications	UL	CSA	DOE		
File Numbers	323353	224693	096A		
Wiring Diagram	3PH Single Voltage SD3				

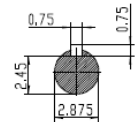
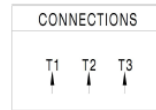
Model Number	SD3-404T-6-RR-E-60-460-60
MFG PN	T404T60U6B
List Price	--
Base Frame	SD-404T-CI-TF



**NOTES:**

- All Cast Iron Construction
- Design B
- IP55 Labyrinth seals on DE and ODE
- H Class Insulation System
- Max Winding Temperature rise 80°C
- Max bearing temperature rise 45°C for 4 pole and 50°C for 2 pole motors when direct coupled.
- Regreasable bearings
- External Grounding provisions
- Maximum foot flatness deviation .127 mm
- Conductive Polymer Cooling Fan
- Diagonally Split Conduit Box rotatable In 90° Increments
- Lead seals in conduit box
- Maximum no load sound power 85 dBA(2 pole), Maximum no load sound power 70 dBA(4 pole), Maximum no load sound power 64 dBA(6 pole).
- No Load Motor Vibration not to exceed
  - Radial 60HZ - 2.03mm/s (2,4 pole) and 1.52mm/s (6 pole)
  - Axial 60HZ - 1.52mm/s
- 300 series Stainless Steel hardware
- Epoxy Coating meeting ASTM B117-97 for 96 h
- All internal surfaces coated with anti-corrosion coating.
- Internal Shaft Grounding brush Installed on drive end.
- No Load test report included with motor

<b>TECHTOP</b> IEEE 841 SEVERE DUTY ELECTRIC MOTOR	
MODEL SD3-404T-6-RR-E-60	TECHTOP COM
NEMA HP 60 60 50 Hz 60	MFG PN T404T60U6B
RPM 1185 980	SER # 18031004
VOLT(Ø) 460 380	DATE 0688002
FLA 72.0 88.0	DESIGN B
SF 1.15 1	ENCL TEFC
KVA CODE G E	IP 55
NOM EFF 0.945	DUTY Cont.
ARC ARRESTOR SEE SPEC	INS CL H
VFD 15:1 CT-1.0 SF	AMB 40 °C
	WEIGHT 1214 lbs
	MADE IN CHINA



 ShangHai HIMAK Electrical Machinery CO., LTD		NEMA TEFC 404T-60HP-6P	
		IEEE-841 UNITS:INCH	
Design	Standard	NO:	CY259.A20.001
Checker	Allow	STEP MARK	1:6 SORT
Auditing	Date		Cast iron Motor