



Model Number

SD3-365TC-6-BR-E-50-460-60

MFG PN

T365T50U6B

List Price

--

All data shown at HIGH voltage setting

Format STD 3 Phase

**Electrical Data**

**General Data**

Rated Motor Output Power	50 HP	Frame Size	365
Rated Motor Speed	1180 r/min	Enclosure	TEFC
Rated Motor Voltage (3 Phase)	460-60 Volts - HZ	Approximate Weight	882
Rated Motor Current	60 Amps	NEMA Design	B
Service Factor	1.15	IP Rating	56
KVA Code	G	Insulation Class	F
Nominal Efficiency	94.1 %	Tropicalization	YES
Nominal Power Factor	0.83 cosθ	Duty	Cont.
Full Load Torque Ft-Lb	297.6 Ft-Lb	Cable Entry	1.25
Temp Rise @ Full Load °C	56.9	Feet Removable	YES
Efficiency Level	IE3 - NEMA Premium	Double Drilled	NO

Load Data	RPM	Trq %FL	Current Amps	Rated Ambient (°C)	40
Locked Rotor	-	218	296.4	Rated Altitude (M)	1000
Breakdown	-	179	-	Coating	7024 - Graphite Grey
Pull Up	-	168	-	Shaft Grounding	YES
125% of FL	1177	-	76.4	Brake Voltage (DC)	--
75% of FL	1189	-	44.55	Brake Torque (N-M)	--
50% of FL	1193	-	32.18	<b>Mechanical Data</b>	
No Load	--	-	16.86	Bearing DE Side	6313 C3

Hazardous Location	CL1 Div2 Grp A,B,C,D	Moment of Inertia	-- kg.m2
		Noise Level	Per NEMA dB (A)
		<b>Loaded Torque Curves</b>	
		--	

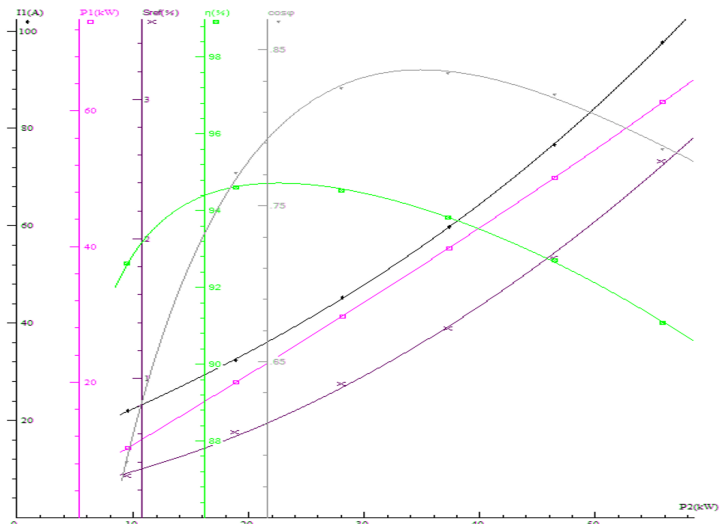
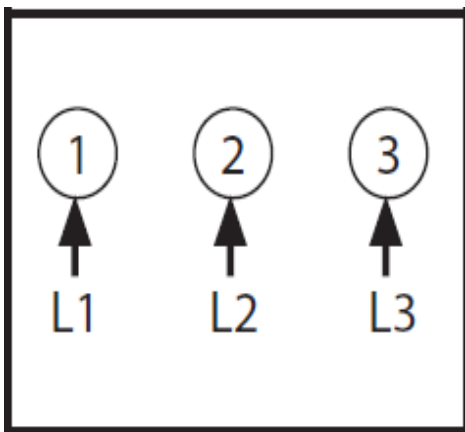
CT VFD Range

--

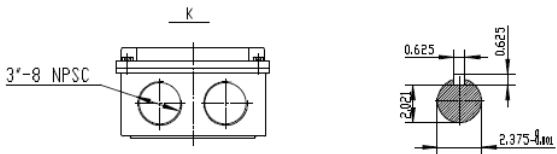
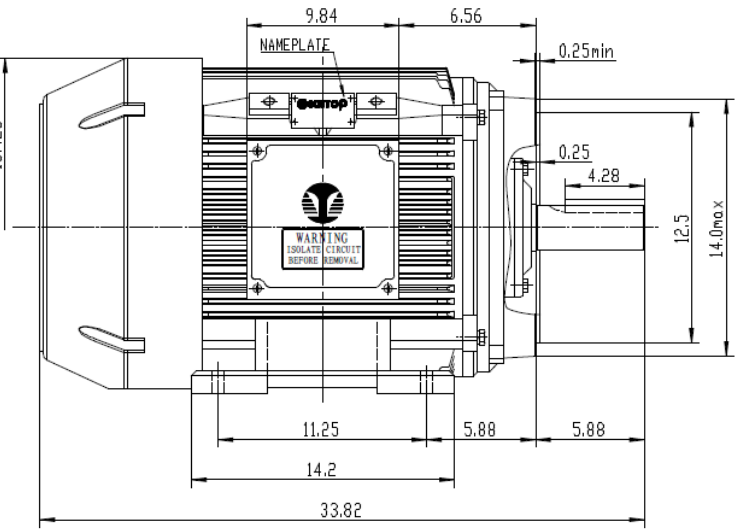
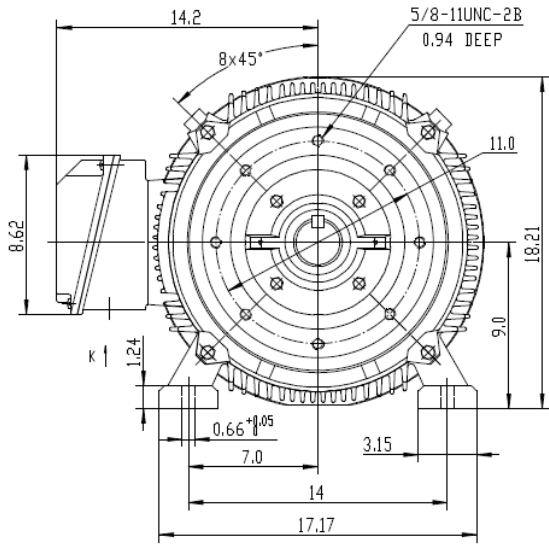
**P1 = INPUT POWER (KW), S = Slip (% of Sync RPM), η = Efficiency (%), cosφ = Power Factor**


Certifications	UL	CSA	DOE
File Numbers	323353	224693	096A

Wiring Diagram 3PH Single Voltage SD3



Model Number	SD3-365TC-6-BR-E-50-460-60
MFG PN	T365T50U6B
List Price	--
Base Frame	SD-365TC-CI-TF



 ShangHai HIMAX Electrical Machinery CO., LTD		NEMA TEFC 364TC CFC	
		NO:	1HMY.010.027
Design	Standard	STEP MARK	1:5 SORT Cast iron Motor
Checker	Allow		
Auditing	Date		