



Model Number

SD3-365T-6-BR-E-50-460-60

MFG PN

T365T50U6B

List Price

--

All data shown at HIGH voltage setting

Format STD 3 Phase

**Electrical Data**

**General Data**

Rated Motor Output Power	50 HP	Frame Size	365
Rated Motor Speed	1180 r/min	Enclosure	TEFC
Rated Motor Voltage (3 Phase)	460-60 Volts - HZ	Approximate Weight	847
Rated Motor Current	60 Amps	NEMA Design	B
Service Factor	1.15	IP Rating	56
KVA Code	G	Insulation Class	F
Nominal Efficiency	94.1 %	Tropicalization	YES
Nominal Power Factor	0.83 cosθ	Duty	Cont.
Full Load Torque Ft-Lb	297.6 Ft-Lb	Cable Entry	1.25
Temp Rise @ Full Load °C	56.9	Feet Removable	YES
Efficiency Level	IE3 - NEMA Premium	Double Drilled	NO

Load Data	RPM	Trq %FL	Current Amps	Rated Ambient (°C)
Locked Rotor	-	218	296.4	40
Breakdown	-	179	-	Rated Altitude (M)
Pull Up	-	168	-	1000
125% of FL	1177	-	76.4	Coating
75% of FL	1189	-	44.55	7024 - Graphite Grey
50% of FL	1193	-	32.18	Shaft Grounding
No Load	--	-	16.86	YES
				Brake Voltage (DC)
				--
				Brake Torque (N-M)
				--

**Mechanical Data**

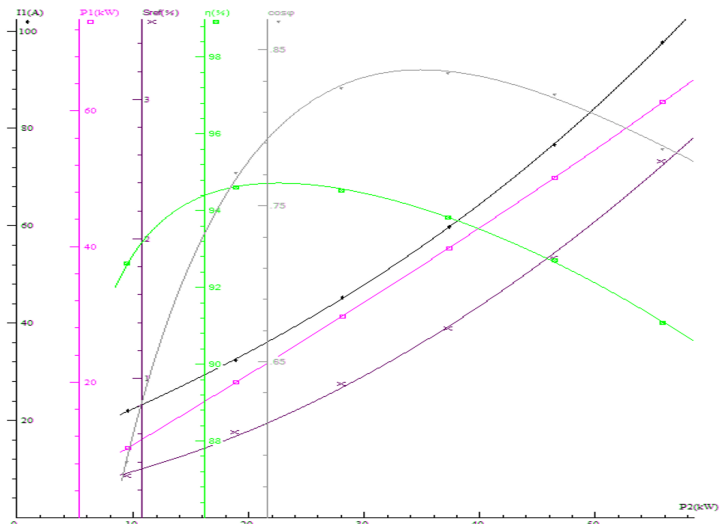
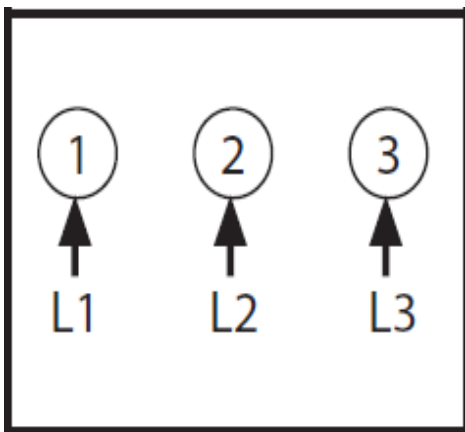
Hazardous Location	CL1 Div2 Grp A,B,C,D	Bearing DE Side	6313 C3
		Bearing NDE Side	6313 C3
		Moment of Inertia	-- kg.m2
		Noise Level	Per NEMA dB (A)

**Loaded Torque Curves**

CT VFD Range	--	<b>P1 = INPUT POWER (KW), S = Slip (% of Sync RPM), η = Efficiency (%), cosφ = Power Factor</b>
--------------	----	---

Certifications	UL	CSA	DOE
File Numbers	323353	224693	096A

Wiring Diagram 3PH Single Voltage SD3



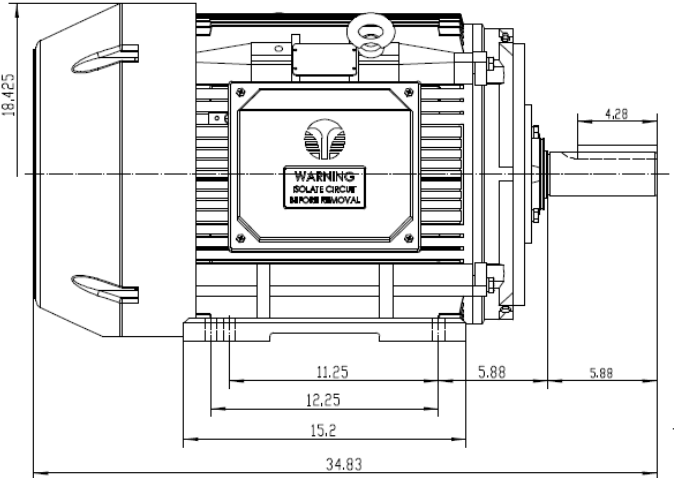
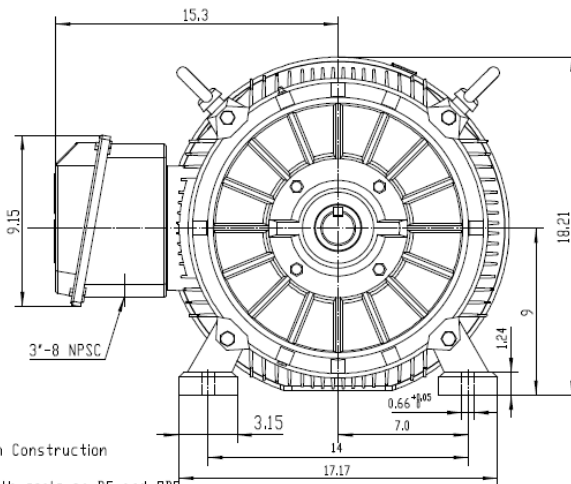


Model Number SD3-365T-6-BR-E-50-460-60

MFG PN T365T50U6B

List Price --

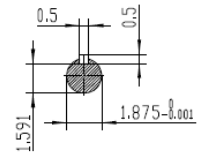
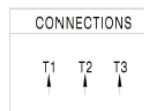
Base Frame SD-365T-CI-TF



**NOTES:**

1. All Cast Iron Construction
2. Design B
3. IP55 Labyrinth seals on DE and DDE
4. H Class Insulation System
5. Max Winding Temperature rise 80°C
6. Max bearing temperature rise 45°C for 4 pole and 50°C for 2 pole motors when direct coupled.
7. Regreasable bearings
8. External Grounding provisions
9. Maximum foot flatness deviation .127 mm
10. Conductive Polymer Cooling Fan
11. Diagonally Split Conduit Box rotatable in 90° Increments
12. Lead seals in conduit box
13. Maximum no load sound power 85 dBA(2 pole),  
Maximum no load sound power 70 dBA(4 pole),  
Maximum no load sound power 64 dBA(6 pole).
14. No Load Motor Vibration not to exceed  
a. Radial 60HZ - 2.03mm/s (2,4 pole) and 1.52mm/s (6 pole)  
b. Axial 60HZ - 1.52mm/s
15. 300 series Stainless Steel hardware
16. Epoxy Coating meeting ASTM B117-97 for 96 h
17. All Internal surfaces coated with anti-corrosion coating.
18. Internal Shaft Grounding brush Installed on drive end.
19. No Load test report included with motor

<b>TECHTOP IEEE 841</b>		SEVERE DUTY ELECTRIC MOTOR	
MODEL	SD3-365T-6-BR-E-50	MFG PN	T365T50U6B
NEMA	50 Hz	SER #	1603102042
HP	50	DATE	06/8/002
RPM	1180	DESIGN	B
VOLT(S)	460	FRAME	365T
FLA	60.9	ENCL	TEFC
SF	1.15	IP	55
KVA CODE	G	DUTY	Cont.
NOM EFF	0.941	INS CL	H
ARRESTOR		AMB	40 °C
VFD 15:1 CT-1.0 SF		WEIGHT	524.7 lbs
		MADE IN CHINA 200495	



 ShangHai HIMAK Electrical Machinery CO., LTD		NEMA TEFC 365T-50HP-6P	
		IEEE-841 UNITS:INCH	
Design	Standard	NO:	CY258.A20.006
Checker	Allow	STEP MARK	1:5 SORT Cast iron Motor
Auditing	Date		