



Model Number

SD3-364TS-2-BR-E-60-460-60

MFG PN

T364TS60U2B

List Price

--

All data shown at HIGH voltage setting

Format STD 3 Phase

Electrical Data

General Data

Rated Motor Output Power	60 HP	Frame Size	364
Rated Motor Speed	3560 r/min	Enclosure	TEFC
Rated Motor Voltage (3 Phase)	460-60 Volts - HZ	Approximate Weight	767.5
Rated Motor Current	66 Amps	NEMA Design	B
Service Factor	1.15	IP Rating	56
KVA Code	G	Insulation Class	F
Nominal Efficiency	93.6 %	Tropicalization	YES
Nominal Power Factor	0.91 cosθ	Duty	Cont.
Full Load Torque Ft-Lb	119.73 Ft-Lb	Cable Entry	1.25
Temp Rise @ Full Load °C	62.9	Feet Removable	YES
Efficiency Level	IE3 - NEMA Premium	Double Drilled	NO

Load Data	RPM	Trq %FL	Current Amps	Rated Ambient (°C)
Locked Rotor	-	146	404	40
Breakdown	-	226	-	Rated Altitude (M)
Pull Up	-	84	-	1000
125% of FL	3548	-	84.01	Coating
75% of FL	3572	-	49.52	7024 - Graphite Grey
50% of FL	3582	-	34.49	Shaft Grounding
No Load	--	-	13.05	YES

Mechanical Data

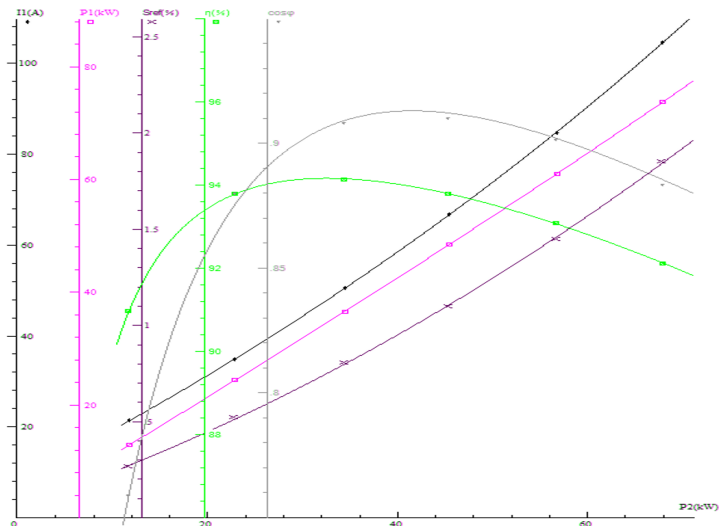
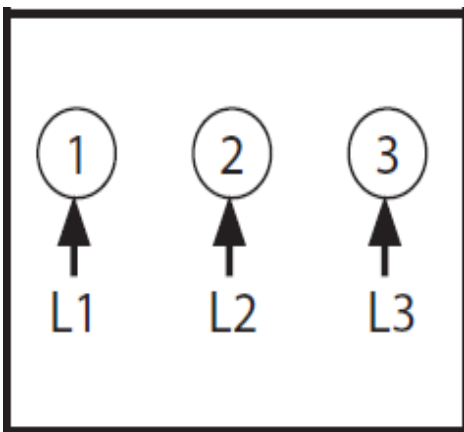
Hazardous Location	CL1 Div2 Grp A,B,C,D	Bearing DE Side	6313 C3
		Bearing NDE Side	6313 C3
		Moment of Inertia	-- kg.m2
		Noise Level	Per NEMA dB (A)

Loaded Torque Curves

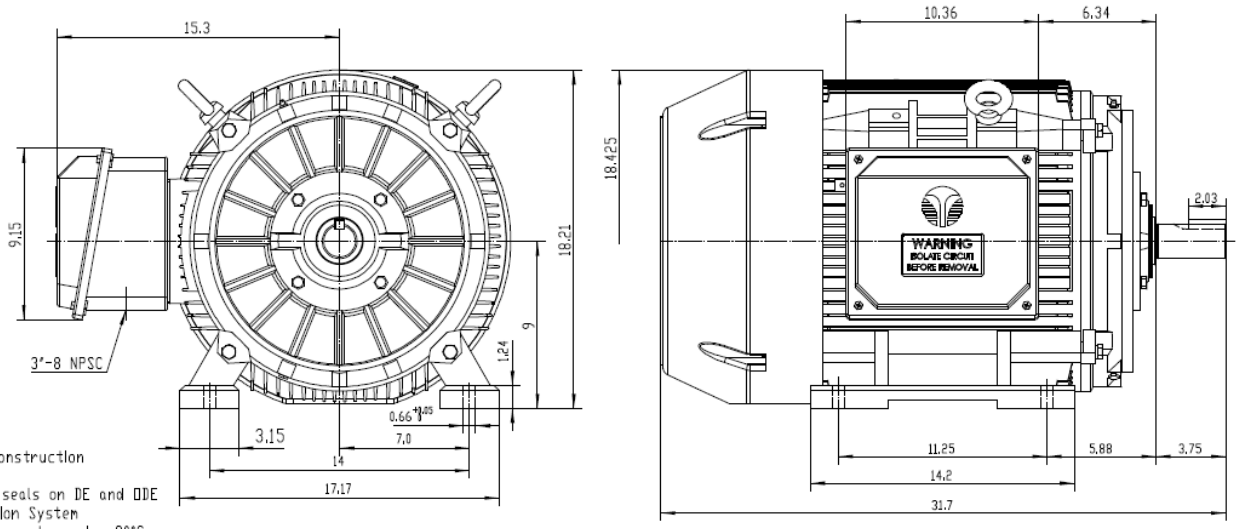
CT VFD Range	--	P1 = INPUT POWER (KW), S = Slip (% of Sync RPM), η = Efficiency (%), cosφ = Power Factor	
--------------	----	---	--

Certifications	UL	CSA	DOE
File Numbers	323353	224693	096A

Wiring Diagram 3PH Single Voltage SD3



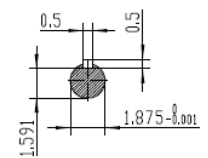
Model Number	SD3-364TS-2-BR-E-60-460-60
MFG PN	T364TS60U2B
List Price	--
Base Frame	SD-364TS-CI-TF



NOTES:

- All Cast Iron Construction
- Design B
- IP55 Labyrinth seals on DE and ODE
- H Class Insulation System
- Max Winding Temperature rise 80°C
- Max bearing temperature rise 45°C for 4 pole and 50°C for 2 pole motors when direct coupled.
- Regreasable bearings
- External Grounding provisions
- Maximum foot flatness deviation .127 mm
- Conductive Polymer Cooling Fan
- Diagonally Split Conduit Box rotatable In 90° Increments
- Lead seals in conduit box
- Maximum no load sound power 85 dBA(2 pole),
Maximum no load sound power 70 dBA(4 pole),
Maximum no load sound power 64 dBA(6 pole).
- No Load Motor Vibration not to exceed
a.Radial 60HZ - 2.03mm/s (2,4 pole) and 1.52mm/s (6 pole)
b.Axial 60HZ - 1.52mm/s
- 300 series Stainless Steel hardware
- Epoxy Coating meeting ASTM B117-97 for 96 h
- All Internal surfaces coated with anti-corrosion coating.
- Internal Shaft Grounding brush installed on drive end.
- No Load test report Included with motor

TECHTOP IEEE 841 SEVERE DUTY ELECTRIC MOTOR	
MODEL SD3-364TS-2BR-E-60	TECHTOP.COM
NEMA HP 60 50 Hz 60	MFG PN T364TS60U2B
rpm 3580 2940	SER # 160102040
VOLT(3Ø) 460 380	DATE 05/08/02
FLA 66.0 81.4	DESIGN B
SF 1.35 1	FRAME 364TS
KVA CODE 0 D	ENCL TEFC
NOM EFF 0.936	IP 55
ARC RESTOR 125	DUTY S5
INS CL H	INS CL H
AMB 40 °C	AMB 40 °C
WEIGHT 734.9 lbs	WEIGHT 734.9 lbs
VFD 15:1 CT-1.0 SF	MADE IN CHINA



TECHTOP Shanghai HIMAK Electrical Machinery CO., LTD		NEMA TEFC 364TS-60HP-2P IEEE-841 UNITS:INCH	
Design	Standard	NO:	CY258.A20.001
Checker	Allow	STEP MARK	1:5 SORT Cast iron Motor
Auditing	Date		