



**Model Number** SD3-364TC-6-BR-E-40-460-60

**MFG PN** T364T40U6B

**List Price** --

All data shown at HIGH voltage setting

Format STD 3 Phase

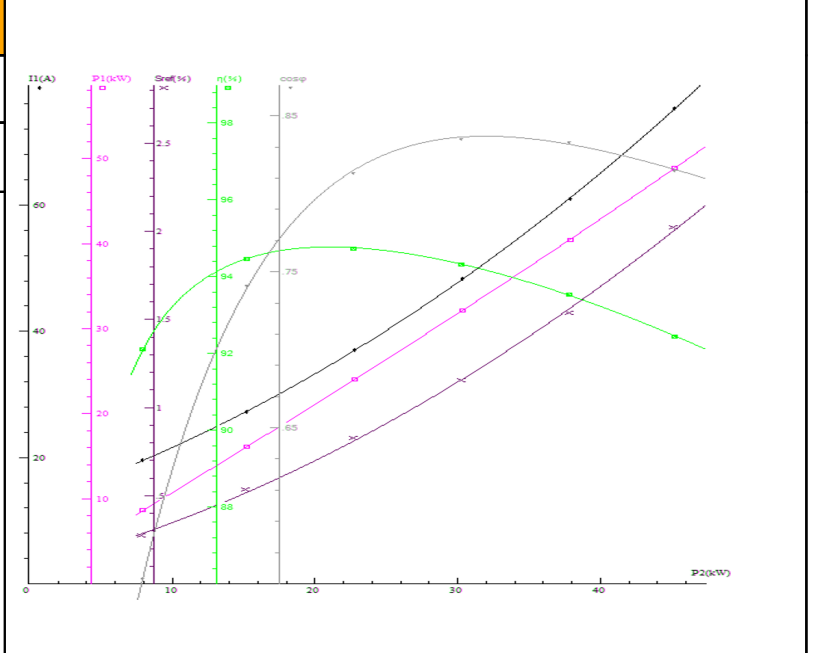
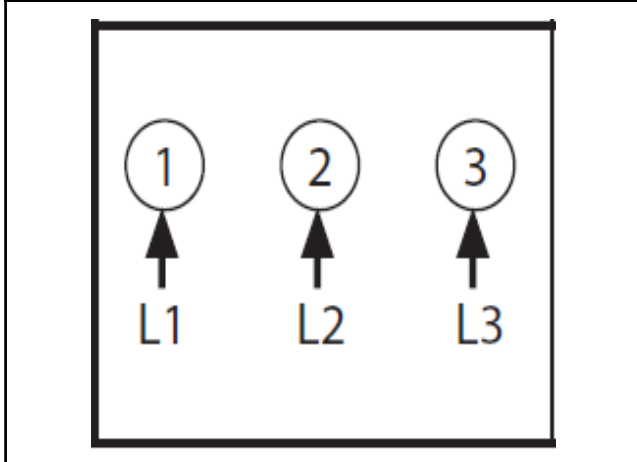
Electrical Data		General Data	
Rated Motor Output Power	40 HP	Frame Size	364
Rated Motor Speed	1180 r/min	Enclosure	TEFC
Rated Motor Voltage (3 Phase)	460-60 Volts - HZ	Approximate Weight	805
Rated Motor Current	48 Amps	NEMA Design	B
Service Factor	1.15	IP Rating	56
KVA Code	G	Insulation Class	F
Nominal Efficiency	94.1 %	Tropicalization	YES
Nominal Power Factor	0.83 cosθ	Duty	Cont.
Full Load Torque Ft-Lb	241 Ft-Lb	Cable Entry	1.25
Temp Rise @ Full Load °C	45	Feet Removable	YES
Efficiency Level	IE3 - NEMA Premium	Double Drilled	NO

Load Data	RPM	Trq %FL	Current Amps	Mechanical Data	
Locked Rotor	-	218	258	Rated Ambient (°C)	40
Breakdown	-	213	-	Rated Altitude (M)	1000
Pull Up	-	189	-	Coating	7024 - Graphite Grey
125% of FL	1181	-	60.44	Shaft Grounding	YES
75% of FL	1190	-	36.6	Brake Voltage (DC)	--
50% of FL	1194	-	27	Brake Torque (N-M)	--
No Load	--	-	16.22		

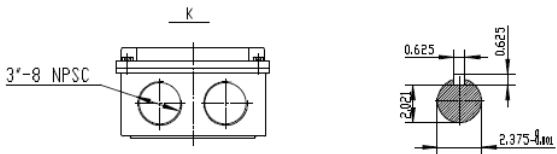
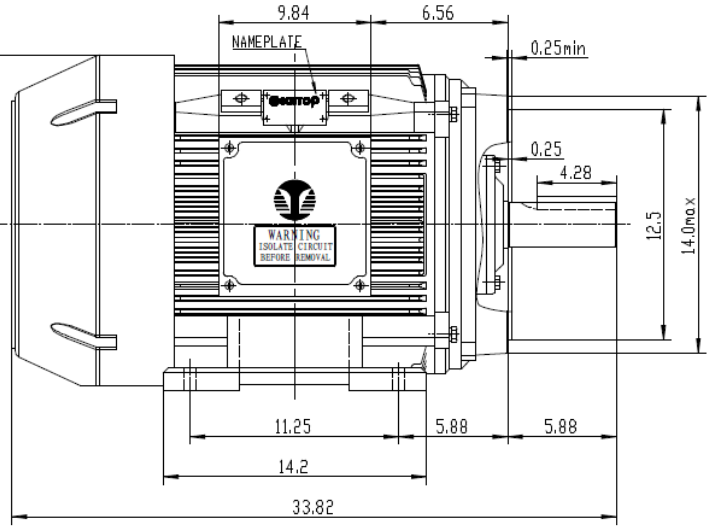
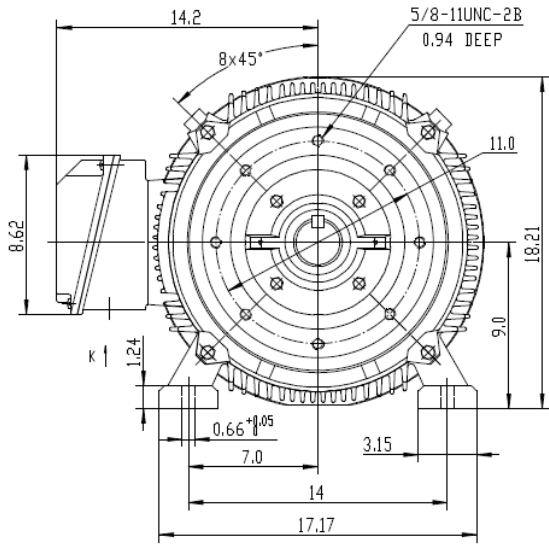
Hazardous Location	CL1 Div2 Grp A,B,C,D		Moment of Inertia	-- kg.m2
			Noise Level	Per NEMA dB (A)


CT VFD Range	--	<b>Loaded Torque Curves</b>	
$P_1 = \text{INPUT POWER (KW)}$ , $S = \text{Slip (\% of Sync RPM)}$ , $\eta = \text{Efficiency (\%)}$ , $\cos\phi = \text{Power Factor}$			

Certifications	UL	CSA	DOE
File Numbers	323353	224693	096A
Wiring Diagram	3PH Single Voltage SD3		



Model Number	SD3-364TC-6-BR-E-40-460-60
MFG PN	T364T40U6B
List Price	--
Base Frame	SD-364TC-CI-TF



 ShangHai HIMAX Electrical Machinery CO., LTD		NEMA TEFC 364TC CFC	
		NO:	1HMY.010.027
Design	Standard	STEP MARK	1:5 SORT Cast iron Motor
Checker	Allow		
Auditing	Date		