



Model Number

SD3-364T-6-BR-E-40-460-60

MFG PN

T364T40U6B

List Price

--

All data shown at HIGH voltage setting

Format STD 3 Phase

Electrical Data

General Data

Rated Motor Output Power	40 HP	Frame Size	364
Rated Motor Speed	1180 r/min	Enclosure	TEFC
Rated Motor Voltage (3 Phase)	460-60 Volts - HZ	Approximate Weight	770
Rated Motor Current	48 Amps	NEMA Design	B
Service Factor	1.15	IP Rating	56
KVA Code	G	Insulation Class	F
Nominal Efficiency	94.1 %	Tropicalization	YES
Nominal Power Factor	0.83 cosθ	Duty	Cont.
Full Load Torque Ft-Lb	241 Ft-Lb	Cable Entry	1.25
Temp Rise @ Full Load °C	45	Feet Removable	YES
Efficiency Level	IE3 - NEMA Premium	Double Drilled	NO

Load Data	RPM	Trq %FL	Current Amps	Rated Ambient (°C)	40
Locked Rotor	-	218	258	Rated Altitude (M)	1000
Breakdown	-	213	-	Coating	7024 - Graphite Grey
Pull Up	-	189	-	Shaft Grounding	YES
125% of FL	1181	-	60.44	Brake Voltage (DC)	--
75% of FL	1190	-	36.6	Brake Torque (N-M)	--
50% of FL	1194	-	27	Mechanical Data	
No Load	--	-	16.22	Bearing DE Side	6313 C3

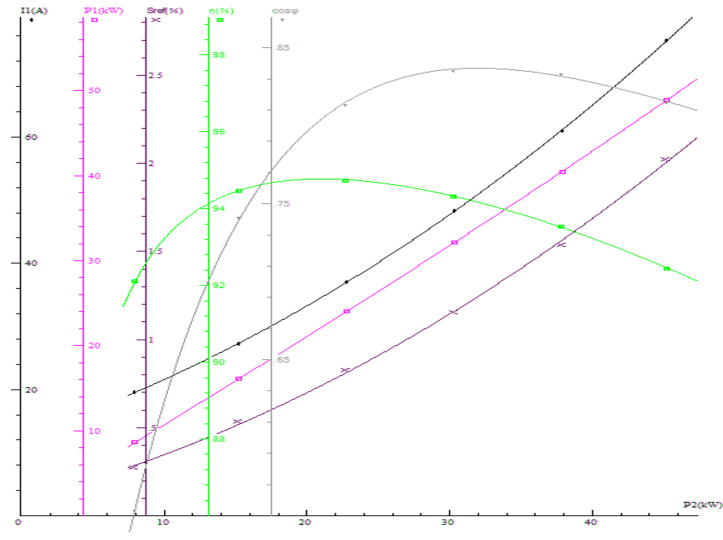
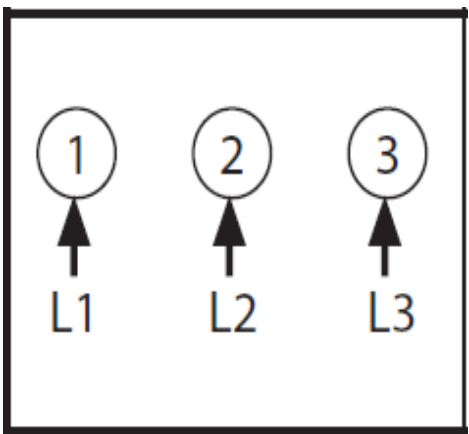
Hazardous Location	CL1 Div2 Grp A,B,C,D	Moment of Inertia	-- kg.m2
		Noise Level	Per NEMA dB (A)
		Loaded Torque Curves	
		--	

CT VFD Range: --

P1 = INPUT POWER (KW), S = Slip (% of Sync RPM), η = Efficiency (%), cosφ = Power Factor

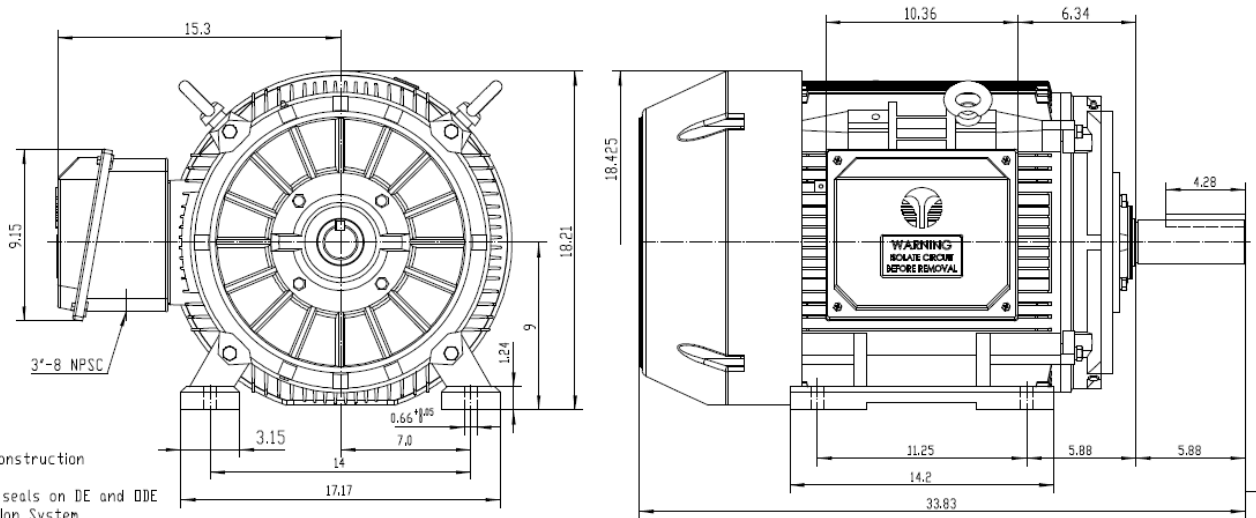
Certifications	UL	CSA	DOE
File Numbers	323353	224693	096A

Wiring Diagram: 3PH Single Voltage SD3





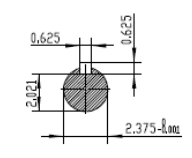
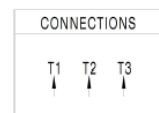
Model Number	SD3-364T-6-BR-E-40-460-60
MFG PN	T364T40U6B
List Price	--
Base Frame	SD-364T-CI-TF



NOTES:

- All Cast Iron Construction
- Design B
- IP55 Labyrinth seals on DE and DDE
- H Class Insulation System
- Max Winding Temperature rise 80°C
- Max bearing temperature rise 45°C for 4 pole and 50°C for 2 pole motors when direct coupled.
- Regreasable bearings
- External Grounding provisions
- Maximum foot flatness deviation .127 mm
- Conductive Polymer Cooling Fan
- Diagonally Split Conduit Box rotatable in 90° Increments
- Lead seals in conduit box
- Maximum no load sound power 85 dBA(2 pole),
Maximum no load sound power 70 dBA(4 pole),
Maximum no load sound power 64 dBA(6 pole).
- No Load Motor Vibration not to exceed
a. Radial 60HZ - 2.03mm/s (2.4 pole) and 1.52mm/s (6 pole)
b. Axial 60HZ - 1.52mm/s
- 300 series Stainless Steel hardware
- Epoxy Coating meeting ASTM B117-97 for 96 h
- All Internal surfaces coated with anti-corrosion coating.
- Internal Shaft Grounding brush Installed on drive end.
- No Load test report included with motor

TECHTOP IEEE 841 SEVERE DUTY ELECTRIC MOTOR		TECHTOP.COM	
MODEL	SD3-364T-6-BR-E-40	MFG PN	T 364T40U6B
NEMA	40	SER #	1503102839
HP	40	DATE	0688002
RPM	1180	DESIGN	B
VOLT(3Ø)	460	FRAME	364T
FLA	48.0	ENCL	TEFC
SF	1.15	IP	56
KVA CODE	G	DUTY	Cont.
NOM EFF	0.941	INS CL	H
BEARING SIZE	05	AMB	40 °C
ARC ARRESTOR CODE	0313-C3	WEIGHT	758.5 (lbs)
VFD	15:1 CT-1.0 SF	MADE IN CHINA	



 ShangHai HIMAK Electrical Machinery CO., LTD		NEMA TEFC 364T-40HP-6P	
		IEEE-841 UNITS:INCH	
Design	Standard	NO:	CY258.A20.003
Checker	Allow	STEP MARK	1:5 SORT Cast iron Motor
Auditing	Date		