



Model Number

SD3-364T-4-BR-E-60-460-60

MFG PN

T364T60U4B

List Price

--

All data shown at HIGH voltage setting

Format STD 3 Phase

Electrical Data

General Data

Rated Motor Output Power	60 HP	Frame Size	364
Rated Motor Speed	1775 r/min	Enclosure	TEFC
Rated Motor Voltage (3 Phase)	460-60 Volts - HZ	Approximate Weight	751.5
Rated Motor Current	68.8 Amps	NEMA Design	B
Service Factor	1.15	IP Rating	56
KVA Code	G	Insulation Class	F
Nominal Efficiency	95 %	Tropicalization	YES
Nominal Power Factor	0.86 cosθ	Duty	Cont.
Full Load Torque Ft-Lb	240.46 Ft-Lb	Cable Entry	1.25
Temp Rise @ Full Load °C	63.7	Feet Removable	YES
Efficiency Level	IE3 - NEMA Premium	Double Drilled	NO

Load Data	RPM	Trq %FL	Current Amps	Mechanical Data	
Locked Rotor	-	177	413.2	Bearing DE Side	6313 C3
Breakdown	-	259	-	Bearing NDE Side	6313 C3
Pull Up	-	139	-	Moment of Inertia	-- kg.m2
125% of FL	1770	-	87.43	Noise Level	Per NEMA dB (A)
75% of FL	1784	-	52.16		
50% of FL	1790	-	37.41		
No Load	1796	-	18.91		

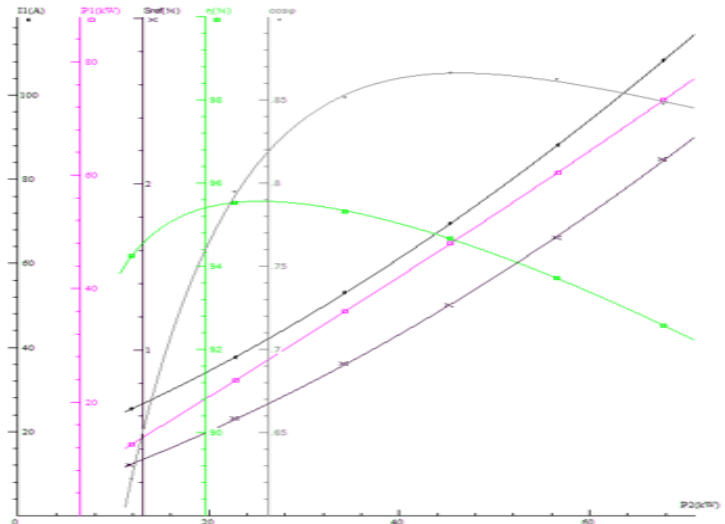
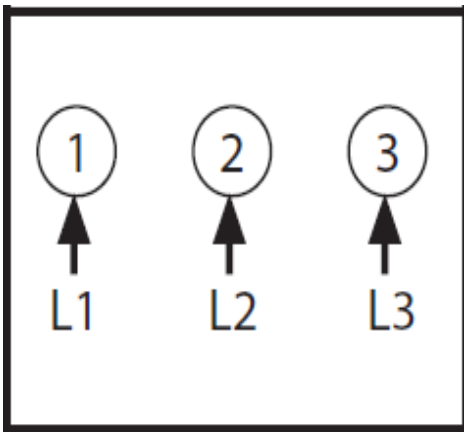
Hazardous Location **CL1 Div2 Grp A,B,C,D**

Loaded Torque Curves

P1 = INPUT POWER (KW), S = Slip (% of Sync RPM), η = Efficiency (%), cosφ = Power Factor

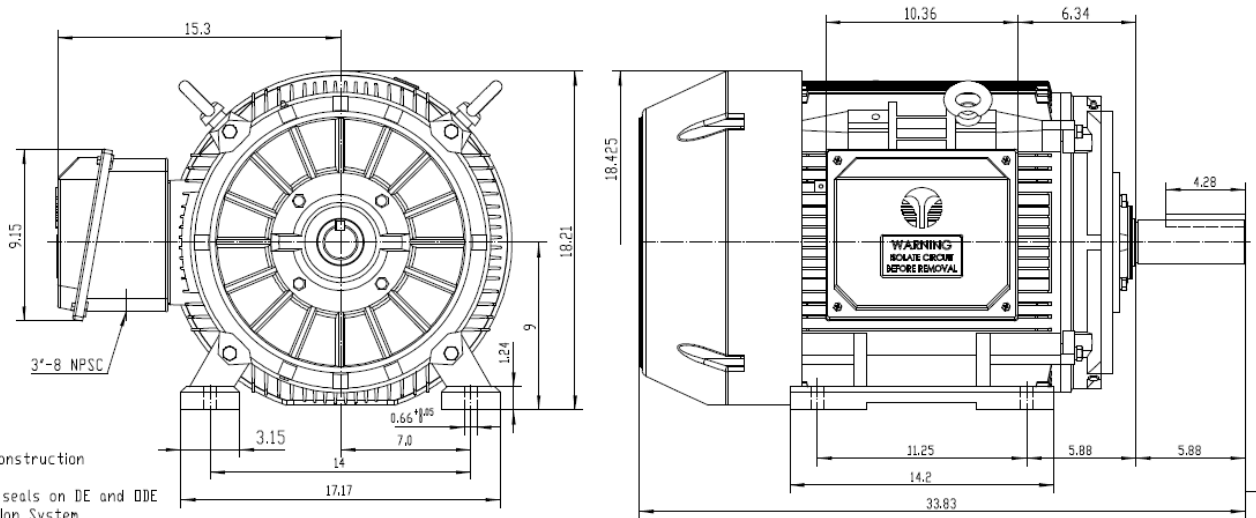
Certifications	UL	CSA	DOE
File Numbers	323353	224693	096A

Wiring Diagram 3PH Single Voltage SD3





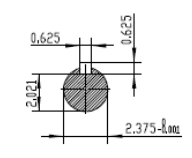
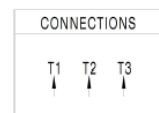
Model Number	SD3-364T-4-BR-E-60-460-60
MFG PN	T364T60U4B
List Price	--
Base Frame	SD-364T-CI-TF



NOTES:

1. All Cast Iron Construction
2. Design B
3. IP55 Labyrinth seals on DE and DDE
4. H Class Insulation System
5. Max Winding Temperature rise 80°C
6. Max bearing temperature rise 45°C for 4 pole and 50°C for 2 pole motors when direct coupled.
7. Regreasable bearings
8. External Grounding provisions
9. Maximum foot flatness deviation .127 mm
10. Conductive Polymer Cooling Fan
11. Diagonally Split Conduit Box rotatable in 90° Increments
12. Lead seals in conduit box
13. Maximum no load sound power 85 dBA(2 pole),
Maximum no load sound power 70 dBA(4 pole),
Maximum no load sound power 64 dBA(6 pole).
14. No Load Motor Vibration not to exceed
a. Radial 60HZ - 2.03mm/s (2.4 pole) and 1.52mm/s (6 pole)
b. Axial 60HZ - 1.52mm/s
15. 300 series Stainless Steel hardware
16. Epoxy Coating meeting ASTM B117-97 for 96 h
17. All Internal surfaces coated with anti-corrosion coating.
18. Internal Shaft Grounding brush Installed on drive end.
19. No Load test report included with motor

TECHTOP IEEE 841 SEVERE DUTY ELECTRIC MOTOR		TECHTOP.COM	
MODEL SD3-364T-6-BR-E-40		SER # T 364T40U4B	
NEMA HP 40	50 Hz 40	MFG PN T 364T40U4B	SER # 1503102839
RPM 1180	575	DATE 0688002	DESIGN B
VOLT(3Ø) 460	3Ø	FRAME 364T	ENCL TEFC
FLA 48.0	58.7	IP 56	DUTY Cont.
SF 1.15	T	INS CL H	AMB 40 °C
KVA CODE G	C	WEIGHT 758.5 (lbs)	MADE IN CHINA
NOM EFF 0.941			



 ShangHai HIMAK Electrical Machinery CO., LTD		NEMA TEFC 364T-40HP-6P	
		IEEE-841 UNITS:INCH	
Design	Standard	NO:	CY258.A20.003
Checker	Allow	STEP MARK	1:5 SORT Cast iron Motor
Auditing	Date		