



Model Number

SD3-326T-6-BR-E-30-460-60

MFG PN

T326T30U6B

List Price

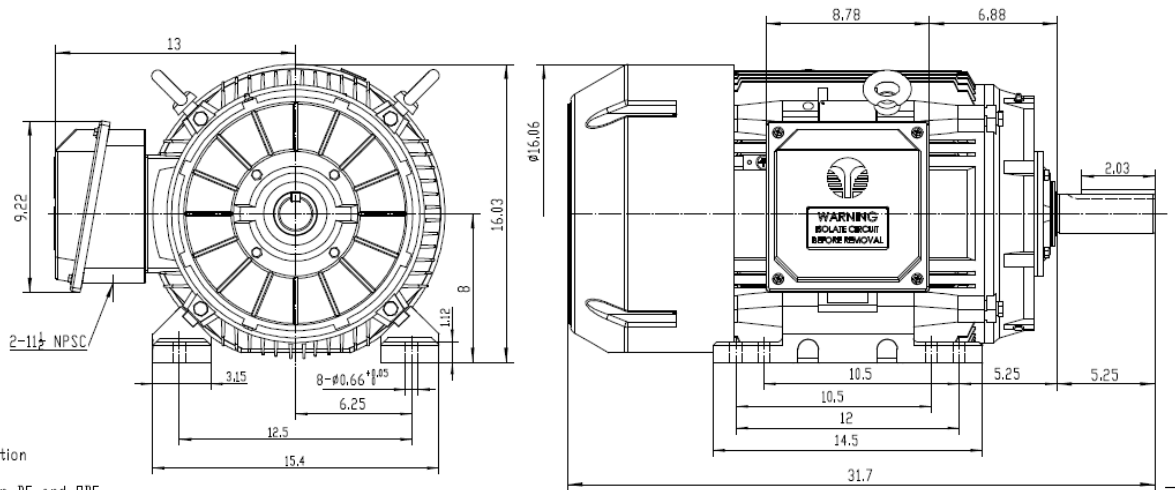
--

All data shown at HIGH voltage setting

Format STD 3 Phase

| Electrical Data | | | | General Data | |
|-------------------------------|------------------------|---------|--------------|---|----------------------|
| Rated Motor Output Power | 30 HP | | | Frame Size | 326 |
| Rated Motor Speed | 1175 r/min | | | Enclosure | TEFC |
| Rated Motor Voltage (3 Phase) | 460-60 Volts - HZ | | | Approximate Weight | 571.7 |
| Rated Motor Current | 38.2 Amps | | | NEMA Design | B |
| Service Factor | 1.25 | | | IP Rating | 56 |
| KVA Code | G | | | Insulation Class | F |
| Nominal Efficiency | 93 % | | | Tropicalization | YES |
| Nominal Power Factor | 0.79 cosθ | | | Duty | Cont. |
| Full Load Torque Ft-Lb | 178.61 Ft-Lb | | | Cable Entry | 1.25 |
| Temp Rise @ Full Load °C | 56.3 | | | Feet Removable | YES |
| Efficiency Level | IE3 - NEMA Premium | | | Double Drilled | NO |
| Load Data | RPM | Trq %FL | Current Amps | Rated Ambient (°C) | 40 |
| Locked Rotor | - | 172 | 187.7 | Rated Altitude (M) | 1000 |
| Breakdown | - | 200 | - | Coating | 7024 - Graphite Grey |
| Pull Up | - | 129 | - | Shaft Grounding | YES |
| 125% of FL | 1171 | - | 47.87 | Brake Voltage (DC) | -- |
| 75% of FL | 1186 | - | 28.91 | Brake Torque (N-M) | -- |
| 50% of FL | 1191 | - | 21.71 | Mechanical Data | |
| No Load | 1194 | - | 13.03 | Bearing DE Side | 6312 C3 |
| Hazardous Location | CL1 Div2 Grp A,B,C,D | | | Bearing NDE Side | 6312 C3 |
| | | | | Moment of Inertia | -- kg.m2 |
| | | | | Noise Level | Per NEMA dB (A) |
| CT VFD Range | | -- | | Loaded Torque Curves | |
| | | | | $P_1 = \text{INPUT POWER (KW)}$, $S = \text{Slip (\% of Sync RPM)}$, $\eta = \text{Efficiency (\%)}$, $\cos\phi = \text{Power Factor}$ | |
| Certifications | UL | CSA | DOE | | |
| File Numbers | 323353 | 224693 | 096A | | |
| Wiring Diagram | 3PH Single Voltage SD3 | | | | |
| | | | | | |

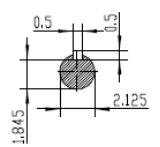
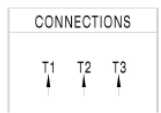
| | |
|--------------|---------------------------|
| Model Number | SD3-326T-6-BR-E-30-460-60 |
| MFG PN | T326T30U6B |
| List Price | -- |
| Base Frame | SD-326T-CI-TF |




NOTES:

- All Cast Iron Construction
- Design B
- IP55 Labyrinth seals on DE and ODE
- H Class Insulation System
- Max Winding Temperature rise 80°C
- Max bearing temperature rise 45°C For 4 pole and 50°C for 2 pole motors when direct coupled.
- Regreasable bearings
- External Grounding provisions
- Maximum foot flatness deviation .127 mm
- Conductive Polymer Cooling Fan
- Diagonally Split Conduit Box rotatable in 90° Increments
- Lead seals in conduit box
- Maximum no load sound power 85 dBA(2 pole),
Maximum no load sound power 70 dBA(4 pole),
Maximum no load sound power 64 dBA(6 pole).
- No Load Motor Vibration not to exceed
a.Radial 60HZ - 2.03mm/s (2,4 pole) and 1.52mm/s (6 pole)
b.Axial 60HZ - 1.52mm/s
- 300 series Stainless Steel hardware
- Epoxy Coating meeting ASTM B117-97 for 96 h
- All Internal surfaces coated with anti-corrosion coating.
- Internal Shaft Grounding brush Installed on drive end.
- No Load test report included with motor

| | |
|--|-----------------|
| TECHTOP IEEE 841 SEVERE DUTY ELECTRIC MOTOR | |
| MODEL: SD3-326T-6-BR-E-30 | TECHTOP.COM |
| NEMA 30 | 50 Hz |
| HP 30 | 30 |
| RPM 1175 | 960 |
| VOLT(3Ø) 460 | 380 |
| FLA 38.2 | 47.5 |
| SF 1.25 | 1 |
| NMA CODE G | C |
| NOM EFF 0.930 | |
| TECHTOP | TECHTOP.COM |
| MFG PN T326T30U6B | SRV# 1903102006 |
| DATE 0608002 | DESIGN B |
| CE | FRAME 326T |
| ENCL TEFC | IP 55 |
| DUTY Cont. | INS CL H |
| AMB 40 °C | AMB 40 °C |
| WEIGHT 568.9 lbs | MADE IN CHINA |



| | | | | | |
|---|----------|---|---------------|------|-----------------|
|  ShangHai HIMAK Electrical Machinery CO., LTD | | NEMA TEFC 326T-30HP-6P IEEE-841 UNITS:INCH | | | |
| | | NO: | CY257.A20.006 | | |
| Design | Standard | STEP MARK | 1:5 | SORT | Cast iron Motor |
| Checker | Allow | | | | |
| Auditing | Date | | | | |