



Model Number

SD3-326T-4-BR-E-50-460-60

MFG PN

T326T50U4B

List Price

--

All data shown at HIGH voltage setting

Format STD 3 Phase

Electrical Data

General Data

Rated Motor Output Power	50 HP	Frame Size	326
Rated Motor Speed	1770 r/min	Enclosure	TEFC
Rated Motor Voltage (3 Phase)	460-60 Volts - HZ	Approximate Weight	612.7
Rated Motor Current	56.3 Amps	NEMA Design	B
Service Factor	1.25	IP Rating	56
KVA Code	G	Insulation Class	F
Nominal Efficiency	94.5 %	Tropicalization	YES
Nominal Power Factor	0.88 cosθ	Duty	Cont.
Full Load Torque Ft-Lb	200.7 Ft-Lb	Cable Entry	1.25
Temp Rise @ Full Load °C	60.6	Feet Removable	YES
Efficiency Level	IE3 - NEMA Premium	Double Drilled	NO

Load Data	RPM	Trq %FL	Current Amps	Rated Ambient (°C)	40
Locked Rotor	-	198	340.2	Rated Altitude (M)	1000
Breakdown	-	234	-	Coating	7024 - Graphite Grey
Pull Up	-	134	-	Shaft Grounding	YES
125% of FL	1763	-	70.54	Brake Voltage (DC)	--
75% of FL	1780	-	42.63	Brake Torque (N-M)	--
50% of FL	1787	-	30.99	Mechanical Data	
No Load	--	-	16.38	Bearing DE Side	6312 C3

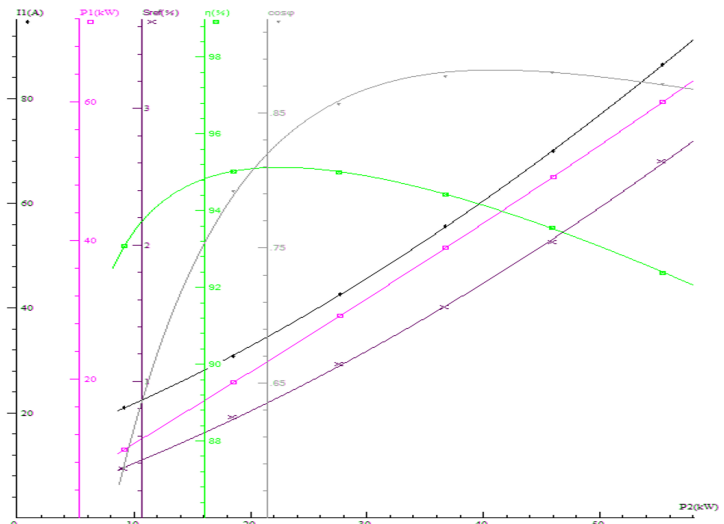
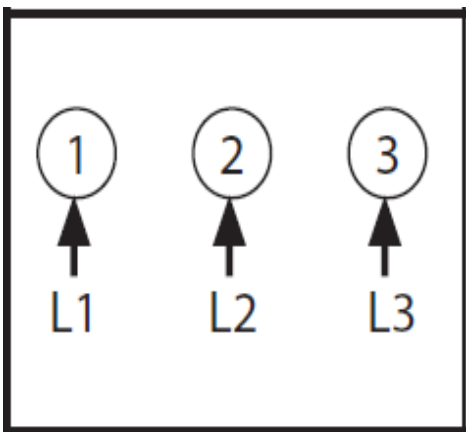
Hazardous Location	CL1 Div2 Grp A,B,C,D			Moment of Inertia	-- kg.m2	
				Noise Level	Per NEMA dB (A)	
				Loaded Torque Curves		--
				$P_1 = \text{INPUT POWER (KW)}$, $S = \text{Slip (\% of Sync RPM)}$, $\eta = \text{Efficiency (\%)}$, $\cos\phi = \text{Power Factor}$		

CT VFD Range		--	
--------------	--	----	--

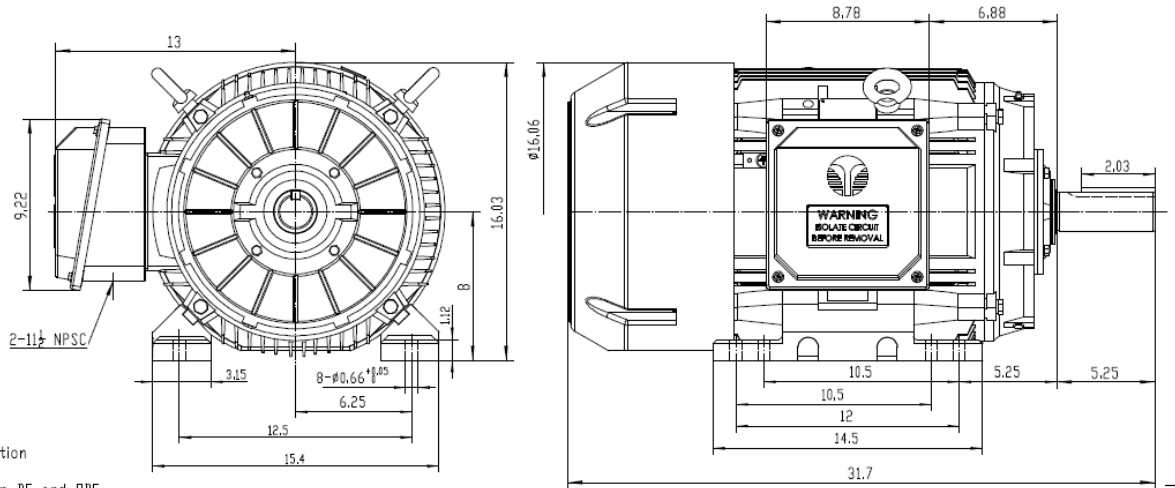
Certifications	UL	CSA	DOE
----------------	----	-----	-----

File Numbers	323353	224693	096A
--------------	--------	--------	------

Wiring Diagram	3PH Single Voltage SD3
----------------	------------------------



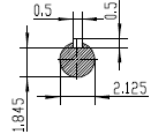
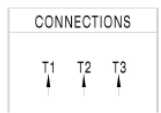
Model Number	SD3-326T-4-BR-E-50-460-60
MFG PN	T326T50U4B
List Price	--
Base Frame	SD-326T-CI-TF



NOTES:

- All Cast Iron Construction
- Design B
- IP55 Labyrinth seals on DE and ODE
- H Class Insulation System
- Max Winding Temperature rise 80°C
- Max bearing temperature rise 45°C For 4 pole and 50°C for 2 pole motors when direct coupled.
- Regreassable bearings
- External Grounding provisions
- Maximum foot flatness deviation .127 mm
- Conductive Polymer Cooling Fan
- Diagonally Split Conduit Box rotatable in 90° Increments
- Lead seals in conduit box
- Maximum no load sound power 85 dBA(2 pole),
Maximum no load sound power 70 dBA(4 pole),
Maximum no load sound power 64 dBA(6 pole).
- No Load Motor Vibration not to exceed
a.Radial 60HZ - 2.03mm/s (2,4 pole) and 1.52mm/s (6 pole)
b.Axial 60HZ - 1.52mm/s
- 300 series Stainless Steel hardware
- Epoxy Coating meeting ASTM B117-97 for 96 h
- All Internal surfaces coated with anti-corrosion coating.
- Internal Shaft Grounding brush Installed on drive end.
- No Load test report included with motor

TECHTOP IEEE 841 SEVERE DUTY ELECTRIC MOTOR	
MODEL: SD3-326T-6-BR-E-30	TECHTOP.COM
NEMA HP: 30	MFG PN: T326T50U4B
RPM: 1175	SERIAL: 1903122006
VOLT(3Ø): 460	DATE: 0688002
FLA: 38.2	DESIGN: B
SF: 1.25	FRAME: 326T
KVA CODE: G	ENCL: TEFC
NOM EFF: 0.930	IP: 55
	DUTY: Cont.
	INS CL: H
	AMB: 40 °C
	WEIGHT: 568.9 lbs
	MADE IN CHINA



 ShangHai HIMAK Electrical Machinery CO., LTD		NEMA TEFC 326T-30HP-6P IEEE-841 UNITS:INCH			
		NO:	CY257.A20.006		
Design	Standard	STEP MARK	1:5	SORT	Cast iron Motor
Checker	Allow				
Auditing	Date				