



Model Number

SD3-324TS-2-BR-E-40-460-60

MFG PN

T324TS40U2B

List Price

--

All data shown at HIGH voltage setting

Format STD 3 Phase

**Electrical Data**

**General Data**

Rated Motor Output Power	40 HP	Frame Size	324
Rated Motor Speed	3550 r/min	Enclosure	TEFC
Rated Motor Voltage (3 Phase)	460-60 Volts - HZ	Approximate Weight	490.6
Rated Motor Current	45 Amps	NEMA Design	B
Service Factor	1.25	IP Rating	56
KVA Code	G	Insulation Class	F
Nominal Efficiency	92.4 %	Tropicalization	YES
Nominal Power Factor	0.9 cosθ	Duty	Cont.
Full Load Torque Ft-Lb	80.17 Ft-Lb	Cable Entry	1.25
Temp Rise @ Full Load °C	62.4	Feet Removable	YES
Efficiency Level	IE3 - NEMA Premium	Double Drilled	NO

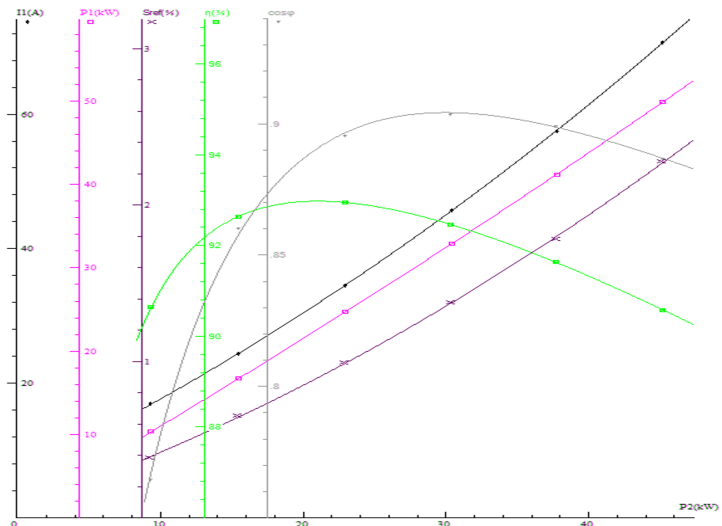
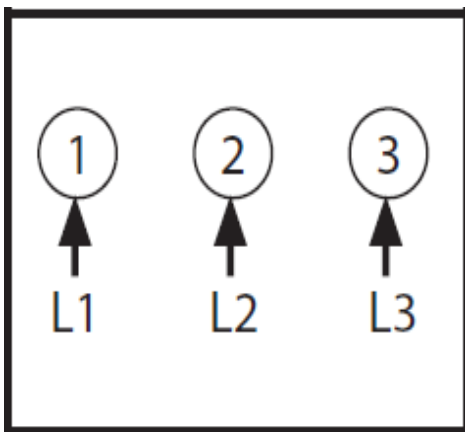
Load Data	RPM	Trq %FL	Current Amps	Rated Ambient (°C)	40
Locked Rotor	-	228	313.8	Rated Altitude (M)	1000
Breakdown	-	238	-	Coating	7024 - Graphite Grey
Pull Up	-	126	-	Shaft Grounding	YES
125% of FL	3536	-	57.12	Brake Voltage (DC)	--
75% of FL	3565	-	33.92	Brake Torque (N-M)	--
50% of FL	3578	-	23.83	<b>Mechanical Data</b>	
No Load	--	-	10.01	Bearing DE Side	6312 C3

Hazardous Location	CL1 Div2 Grp A,B,C,D			Bearing NDE Side	6312 C3
				Moment of Inertia	-- kg.m2
				Noise Level	Per NEMA dB (A)

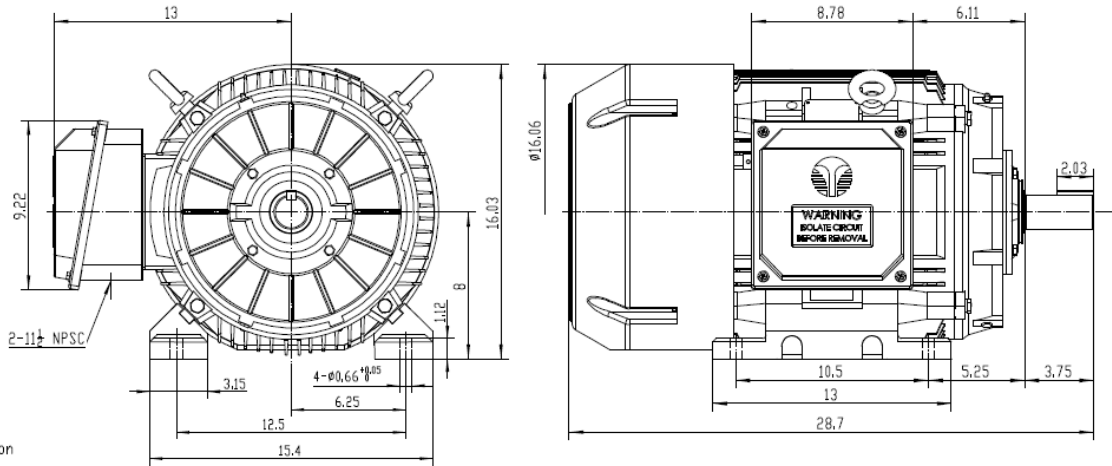
CT VFD Range	--	<b>Loaded Torque Curves</b>		--
<p><b>P1 = INPUT POWER (KW), S = Slip (% of Sync RPM), η = Efficiency (%), cosφ = Power Factor</b></p>				

Certifications	UL	CSA	DOE
File Numbers	323353	224693	096A

Wiring Diagram 3PH Single Voltage SD3



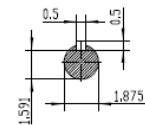
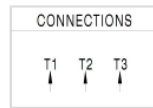
Model Number	SD3-324TS-2-BR-E-40-460-60
MFG PN	T324TS40U2B
List Price	--
Base Frame	SD-324TS-CI-TF




**NOTES:**

- All Cast Iron Construction
- Design B
- IP55 Labyrinth seals on DE and DJE
- H Class Insulation System
- Max Winding Temperature rise 80°C
- Max bearing temperature rise 45°C For 4 pole and 50°C for 2 pole motors when direct coupled.
- Regreasable bearings
- External Grounding provisions
- Maximum foot flatness deviation .127 mm
- Conductive Polymer Cooling Fan
- Diagonally Split Conduit Box rotatable in 90° increments
- Lead seals in conduit box
- Maximum no load sound power 85 dBA(2 pole), Maximum no load sound power 70 dBA(4 pole), Maximum no load sound power 64 dBA(6 pole).
- No Load Motor Vibration not to exceed  
a.Radial 60HZ - 2.03mm/s (2,4 pole) and 1.52mm/s (6 pole)  
b.Axial 60HZ - 1.52mm/s
- 300 series Stainless Steel hardware
- Epoxy Coating meeting ASTM B117-97 for 96 h
- All internal surfaces coated with anti-corrosion coating.
- Internal Shaft Grounding brush Installed on drive end.
- No Load test report Included with motor

<b>TECHTOP IEEE 841</b>		SEVERE DUTY ELECTRIC MOTOR	
MODEL: SD3-324TS-2-BR-E-40		TECHTOP.COM	
NEMA 324TS	HP 40	50 Hz 40	MFG PN T324TS40U2B
RPM 3550	2900	SER # 1803102034	DATE 0688002
VOLTAGE 480	380	DESIGN B	CE
FLA 45.0	56.0	FRAME 324TS	CCC-USA
SF 1.25	1	ENCL TEFC	UL
KVA CODE G	E	IP 55	IP55
NOM EFF 0.924		DUTY Cont.	TECHTOP
ARC ARRESTOR	INS CL F1	AMB 40 °C	WEIGHT 517 lbs
VFD 15:1 CT-1.0 SF		MADE IN CHINA	



 ShangHai HIMAK Electrical Machinery CO., LTD		NEMA TEFC 324TS-40HP-2P	
		IEEE-841 UNITS:INCH	
Design	Standard	NO:	CY257.A20.001
Checker	Allow	STEP MARK	1:5 SORT Cast iron Motor
Auditing	Date		