



Model Number

SD3-284TS-2-BR-E-25-460-60

MFG PN

T284TS25U2B

List Price

--

All data shown at HIGH voltage setting

Format STD 3 Phase

Electrical Data

General Data

Rated Motor Output Power	25 HP	Frame Size	284
Rated Motor Speed	1180 r/min	Enclosure	TEFC
Rated Motor Voltage (3 Phase)	460-60 Volts - HZ	Approximate Weight	347.3
Rated Motor Current	28.1 Amps	NEMA Design	B
Service Factor	1.25	IP Rating	56
KVA Code	E	Insulation Class	F
Nominal Efficiency	90.1 %	Tropicalization	YES
Nominal Power Factor	0.78 cosθ	Duty	Cont.
Full Load Torque Ft-Lb	49.31 Ft-Lb	Cable Entry	1.25
Temp Rise @ Full Load °C	64.4	Feet Removable	YES
Efficiency Level	IE3 - NEMA Premium	Double Drilled	NO

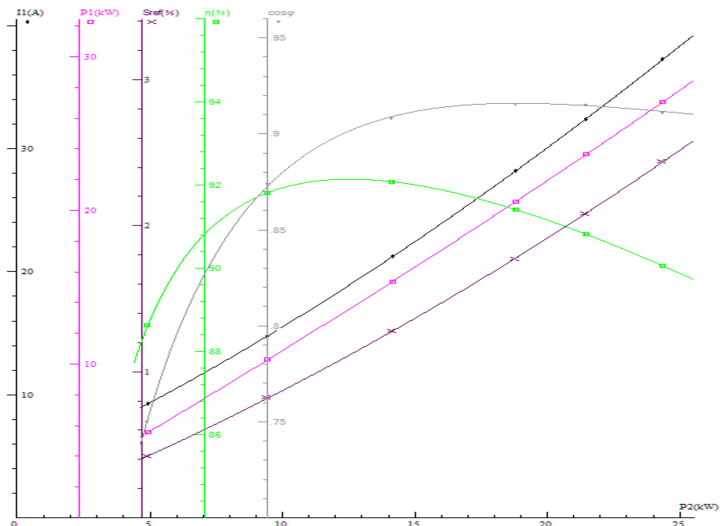
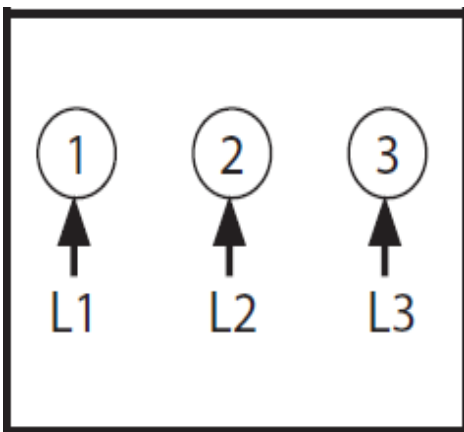
Load Data	RPM	Trq %FL	Current Amps	Rated Ambient (°C)	40
Locked Rotor	-	181	188.2	Rated Altitude (M)	1000
Breakdown	-	252	-	Coating	7024 - Graphite Grey
Pull Up	-	103	-	Shaft Grounding	YES
125% of FL	3526	-	32.12	Brake Voltage (DC)	--
75% of FL	3555	-	20.82	Brake Torque (N-M)	--
50% of FL	3571	-	14.54	Mechanical Data	
No Load	--	-	5.78	Bearing DE Side	6311 C3

Hazardous Location	CL1 Div2 Grp A,B,C,D			Bearing NDE Side	6311 C3
				Moment of Inertia	-- kg.m2
				Noise Level	Per NEMA dB (A)
				--	

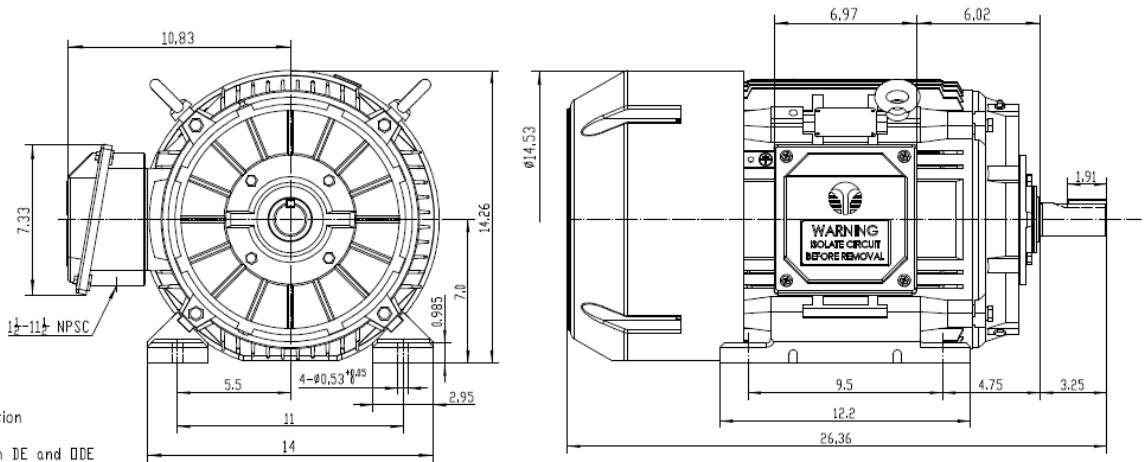
CT VFD Range	--	Loaded Torque Curves	--
$P1 = \text{INPUT POWER (KW)}$, $S = \text{Slip (\% of Sync RPM)}$, $\eta = \text{Efficiency (\%)}$, $\cos\phi = \text{Power Factor}$			

Certifications	UL	CSA	DOE
File Numbers	323353	224693	096A

Wiring Diagram 3PH Single Voltage SD3



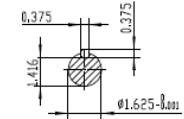
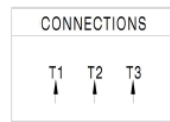
Model Number	SD3-284TS-2-BR-E-25-460-60
MFG PN	T284TS25U2B
List Price	--
Base Frame	SD-284TS-CI-TF




NOTES:

- All Cast Iron Construction
- Design B
- IP55 Labyrinth seals on DE and DDE
- H Class Insulation System
- Max Winding Temperature rise 80°C
- Max bearing temperature rise 45°C for 4 pole and 50°C for 2 pole motors when direct coupled.
- Regreasable bearings
- External Grounding provisions
- Maximum foot flatness deviation .127 mm
- Conductive Polymer Cooling Fan
- Diagonally Split Conduit Box rotatable in 90° Increments
- Lead seals in conduit box
- Maximum no load sound power 85 dBA(2 pole),
Maximum no load sound power 70 dBA(4 pole),
Maximum no load sound power 64 dBA(6 pole)
- No Load Motor Vibration not to exceed
a.Radial 60HZ - 2.03mm/s (2.4 pole) and 1.52mm/s (6 pole)
b.Axial 60HZ - 1.52mm/s
- 300 series Stainless Steel hardware
- Epoxy Coating meeting ASTM B117-97 for 96 h
- All internal surfaces coated with anti-corrosion coating.
- Internal Shaft Grounding brush installed on drive end.
- No Load test report included with motor

TECHTOP IEEC 841 SEVERE DUTY ELECTRIC MOTOR	
MODEL: SD3-284TS-2-BR-E-25	TECHTOP.COM
NEMA HP 25	50 Hz MFG PN T284TS25U2B
RPM 3530	SER # 1603100228
VOLTS 460	DATE 08/05/02
FLA 28.1	DESIGN B
SF 1.25	FRAME 284TS
NLA CODE 0	ENCL TEFC
NOM EFF 0.917	IP 55
	INS CL H
	AMB 40 °C
	WEIGHT 383 lbs
	MADE IN CHINA



 ShangHai HIMAK Electrical Machinery CO., LTD		NEMA TEFC 284TS-25HP-2P	
		IEEC-841 UNITS:INCH	
Design	Standard	NO:	CY256.A20.001
Checker	Allow	STEP MARK	1:4.5 SORT Cast iron Motor
Auditing	Date		