



Model Number

SD3-213T-4-BR-E-7.5-460-60

MFG PN

T213T7.5U2B

List Price

--

All data shown at HIGH voltage setting

Format STD 3 Phase

Electrical Data

General Data

Rated Motor Output Power	7.5 HP	Frame Size	213
Rated Motor Speed	3510 r/min	Enclosure	TEFC
Rated Motor Voltage (3 Phase)	460-60 Volts - HZ	Approximate Weight	141
Rated Motor Current	8.5 Amps	NEMA Design	B
Service Factor	1.25	IP Rating	56
KVA Code	H	Insulation Class	F
Nominal Efficiency	89.5 %	Tropicalization	YES
Nominal Power Factor	0.92 cosθ	Duty	Cont.
Full Load Torque Ft-Lb	14.78 Ft-Lb	Cable Entry	1.25
Temp Rise @ Full Load °C	48	Feet Removable	YES
Efficiency Level	IE3 - NEMA Premium	Double Drilled	NO

Load Data	RPM	Trq %FL	Current Amps	Rated Ambient (°C)
Locked Rotor	-	190	67.78	40
Breakdown	-	302	-	Rated Altitude (M)
Pull Up	-	135	-	1000
125% of FL	3482	-	10.61	Coating
75% of FL	3534	-	6.4	7024 - Graphite Grey
50% of FL	3557	-	4.57	Shaft Grounding
No Load	--	-	2.08	YES
				Brake Voltage (DC)
				--
				Brake Torque (N-M)
				--

Mechanical Data

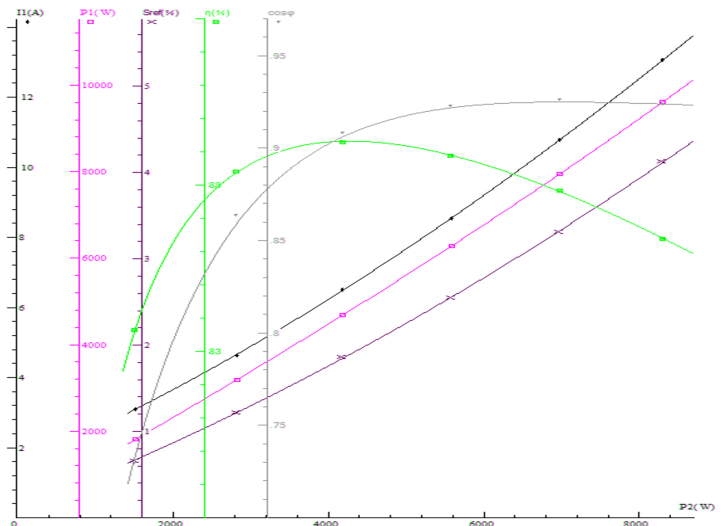
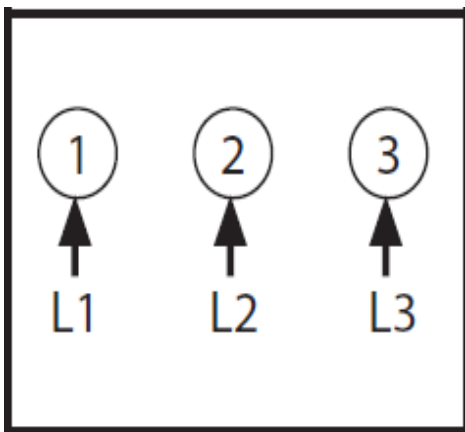
Hazardous Location	CL1 Div2 Grp A,B,C,D	Bearing DE Side	6308ZZ
		Bearing NDE Side	6308ZZ
		Moment of Inertia	-- kg.m2
		Noise Level	Per NEMA dB (A)

Loaded Torque Curves

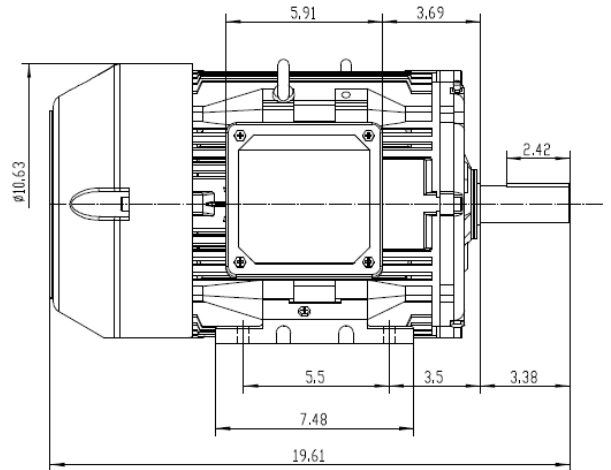
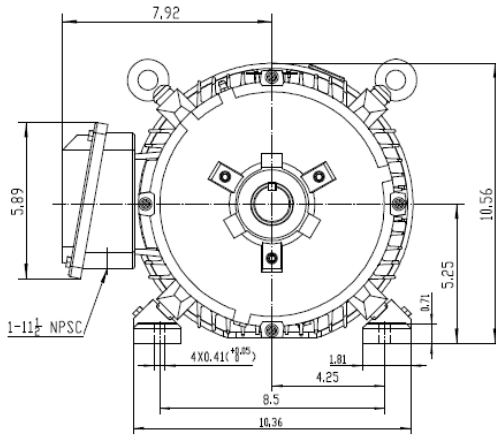
CT VFD Range	--	P1 = INPUT POWER (KW), S = Slip (% of Sync RPM), η = Efficiency (%), cosφ = Power Factor	
--------------	----	---	--

Certifications	UL	CSA	DOE
File Numbers	323353	224693	096A

Wiring Diagram 3PH Single Voltage SD3



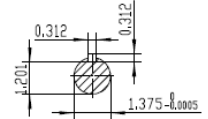
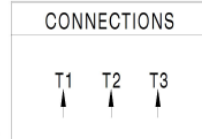
Model Number	SD3-213T-4-BR-E-7.5-460-60
MFG PN	T213T7.5U2B
List Price	--
Base Frame	SD-213T-CI-TF




NOTES:

1. All Cast Iron Construction
2. Design B
3. IP55 Labyrinth seals on DE and DDE
4. H Class Insulation System
5. Max Winding Temperature rise 80°C
6. Max bearing temperature rise 45°C for 4 pole and 50°C for 2 pole motors when direct coupled.
7. Regreasable bearings
8. External Grounding provisions
9. Maximum foot flatness deviation .127 mm
10. Conductive Polymer Cooling Fan
11. Diagonally Split Conduit Box rotatable in 90° Increments
12. Lead seals in conduit box
13. Maximum no load sound power 85 dBA(2 pole), Maximum no load sound power 70 dBA(4 pole), Maximum no load sound power 64 dBA(6 pole).
14. No Load Motor Vibration not to exceed
 - a. Radial 60HZ - 2.03mm/s (2,4 pole) and 1.52mm/s (6 pole)
 - b. Axial 60HZ - 1.52mm/s
15. 300 series Stainless Steel hardware
16. Epoxy Coating meeting ASTM B117-97 for 96 h
17. All internal surfaces coated with anti-corrosion coating.
18. Internal Shaft Grounding brush installed on drive end.
19. No Load test report Included with motor

TECHTOP		IEEE 841		SEVERE DUTY	
				ELECTRIC MOTOR	
MODEL	SD3-213T-4-BR-E-3	TECHTOP.COM	MFG PN	T 213T3UGB	
HP	3	3	SER #	1603102016	
RPM	1175	965	DATE	0588002	
VOLTS(3Ø)	460	380	DESIGN	B	
FLA	4.4	5.0	FRAME	213T	
SF	1.25	1	ENCL	TEFC	
KVA CODE	K	H	IP	55	
NOM EFF	0.895		DUTY	Cont.	
			INS CL	H	
			AMB	40 °C	
			WEIGHT	157.5 lbs	
				224693	
				MADE IN CHINA	



 ShangHai HIMAK Electrical Machinery CO., LTD		NEMA TEFC 213T-3HP-6P	
		IEEE-841 UNITS:INCH	
Design	Standard	NO:	CY254.A20.003
Checker	Allow	STEP MARK	1:3.5 SORT Cast iron Motor
Auditing	Date		