



**Model Number** OX3-CI-TF-445T-4-RR-E-150-460-60

**MFG PN** T445T150U4B

**List Price** --

All data shown at HIGH voltage setting

Format STD 3 Phase

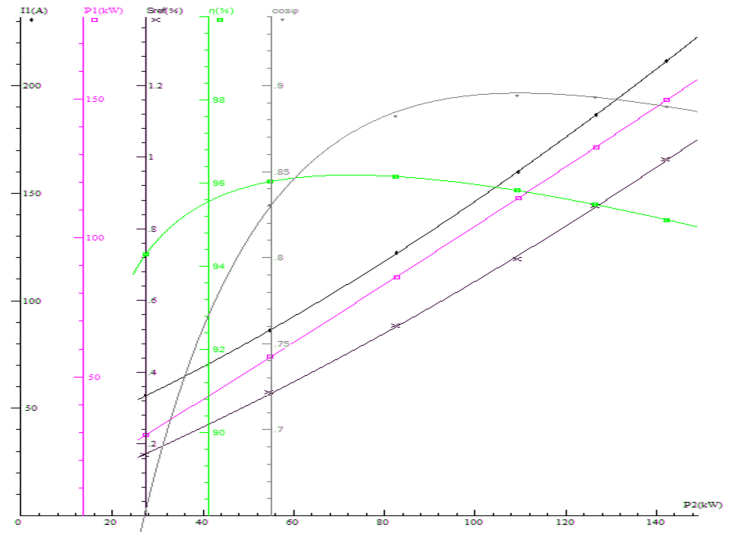
Electrical Data		General Data	
Rated Motor Output Power	150 HP	Frame Size	445
Rated Motor Speed	1785 r/min	Enclosure	TEFC
Rated Motor Voltage (3 Phase)	460-60 Volts - HZ	Approximate Weight	--
Rated Motor Current	330/165 Amps	NEMA Design	C
Service Factor	1.15	IP Rating	55
KVA Code	K	Insulation Class	F
Nominal Efficiency	95.8 %	Tropicalization	YES
Nominal Power Factor	0.89 cosθ	Duty	Cont.
Full Load Torque Ft-Lb	441.96992 Ft-Lb	Cable Entry	1.25
Temp Rise @ Full Load °C	71.7	Feet Removable	YES
Efficiency Level	IE3 - NEMA Premium	Double Drilled	NO

Load Data	RPM	Trq %FL	Current Amps	Mechanical Data	
Locked Rotor	-	310	1544	Rated Ambient (°C)	40
Breakdown	-	371	-	Rated Altitude (M)	1000
Pull Up	-	426	-	Coating	7024 - Graphite Grey
125% of FL	1784	-	203.29	Shaft Grounding	NO
75% of FL	1791	-	125.83	Brake Voltage (DC)	--
50% of FL	1794	-	91.81	Brake Torque (N-M)	--
No Load	--	-	49.19		

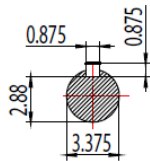
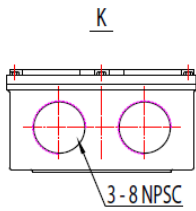
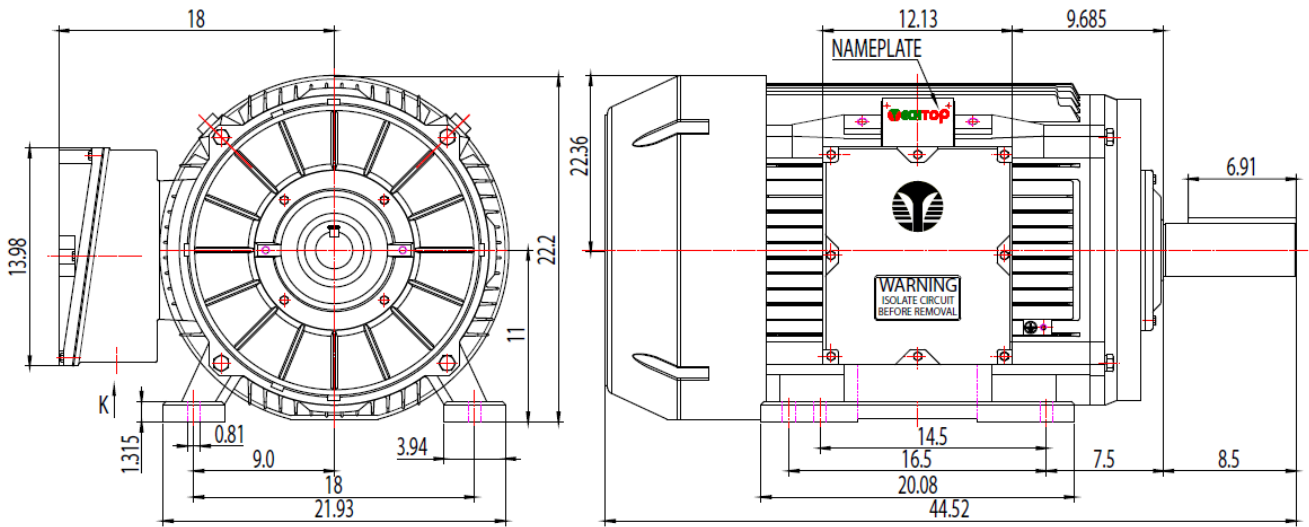
Hazardous Location	CL/II Div2 Grp C,D/F,G		Moment of Inertia	-- kg.m2
			Noise Level	Per NEMA dB (A)


CT VFD Range	--	<b>Loaded Torque Curves</b>	
$P1 = \text{INPUT POWER (KW)}$ , $S = \text{Slip (\% of Sync RPM)}$ , $\eta = \text{Efficiency (\%)}$ , $\cos\phi = \text{Power Factor}$			

Certifications	UL	CSA	DOE
File Numbers	323353	224693	096A
Wiring Diagram	3PH 12 Lead Dual Voltage		



Model Number	OX3-CI-TF-445T-4-RR-E-150-460-60
MFG PN	T445T150U4B
List Price	--
Base Frame	OX-445T-CI-TF



 Shanghai HIMAK Electrical Machinery CO., LTD		NEMA TEFC 444-445T	
Design	Standard	NO:	TXC 444-445T CFC
Checker	Allow	STEP MARK	1:4 SORT Cast iron Motor
Auditing	Date		