



Model Number OX3-CI-TF-444T-6-RR-E-100-460-60

MFG PN T444T100U6B

List Price --

All data shown at HIGH voltage setting

Format STD 3 Phase

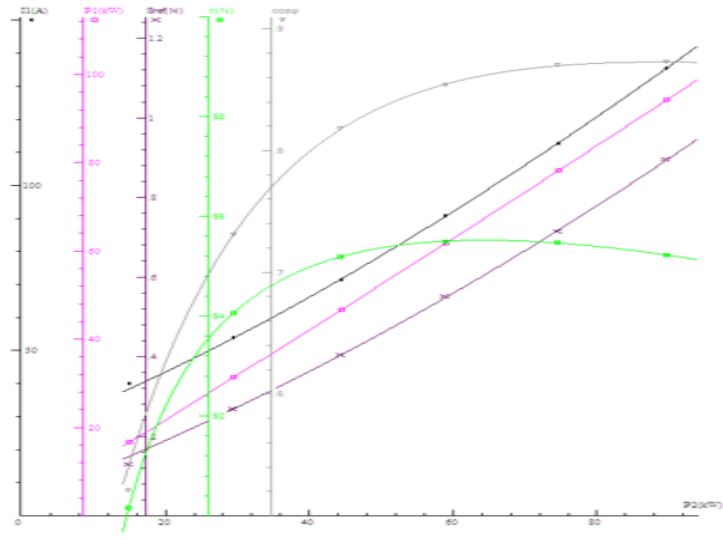
Electrical Data		General Data	
Rated Motor Output Power	100 HP	Frame Size	444
Rated Motor Speed	1190 r/min	Enclosure	TEFC
Rated Motor Voltage (3 Phase)	460-60 Volts - HZ	Approximate Weight	--
Rated Motor Current	230/115 Amps	NEMA Design	C
Service Factor	1.15	IP Rating	55
KVA Code	K	Insulation Class	F
Nominal Efficiency	95 %	Tropicalization	YES
Nominal Power Factor	0.86 cosθ	Duty	Cont.
Full Load Torque Ft-Lb	449.1984 Ft-Lb	Cable Entry	1.25
Temp Rise @ Full Load °C	76	Feet Removable	YES
Efficiency Level	IE3 - NEMA Premium	Double Drilled	NO

Load Data	RPM	Trq %FL	Current Amps	Mechanical Data	
Locked Rotor	-	216	851.2	Bearing DE Side	NU 319
Breakdown	-	202	-	Bearing NDE Side	6319 C3
Pull Up	-	89	-	Moment of Inertia	-- kg.m2
125% of FL	1189	-	141.7	Noise Level	Per NEMA dB (A)
75% of FL	1194	-	87		
50% of FL	1196	-	63.14		
No Load	--	-	33.69		

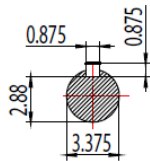
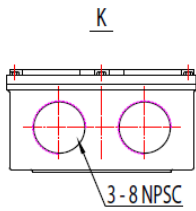
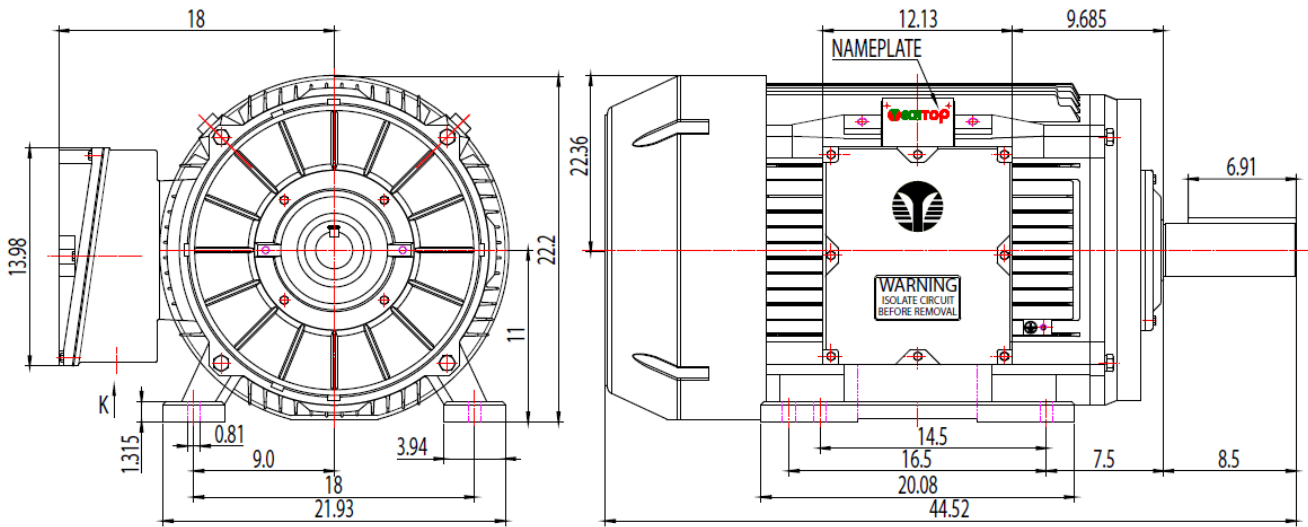
Hazardous Location	CL/II Div2 Grp C,D/F,G		Rated Ambient (°C)	40
--------------------	------------------------	--	--------------------	----


CT VFD Range	--	Loaded Torque Curves		--
P1 = INPUT POWER (KW), S = Slip (% of Sync RPM), η = Efficiency (%), cosφ = Power Factor				

Certifications	UL	CSA	DOE
File Numbers	323353	224693	096A
Wiring Diagram	3PH 12 Lead Dual Voltage		



Model Number	OX3-CI-TF-444T-6-RR-E-100-460-60
MFG PN	T444T100U6B
List Price	--
Base Frame	OX-444T-CI-TF



 Shanghai HIMAK Electrical Machinery CO., LTD		NEMA TEFC 444-445T	
Design	Standard	NO:	TXC 444-445T CFC
Checker	Allow	STEP MARK	1:4 SORT Cast iron Motor
Auditing	Date		