



Model Number OX3-CI-TF-444T-4-RR-E-125-460-60

MFG PN T444T125U4B

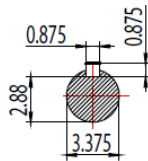
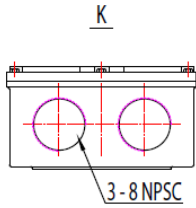
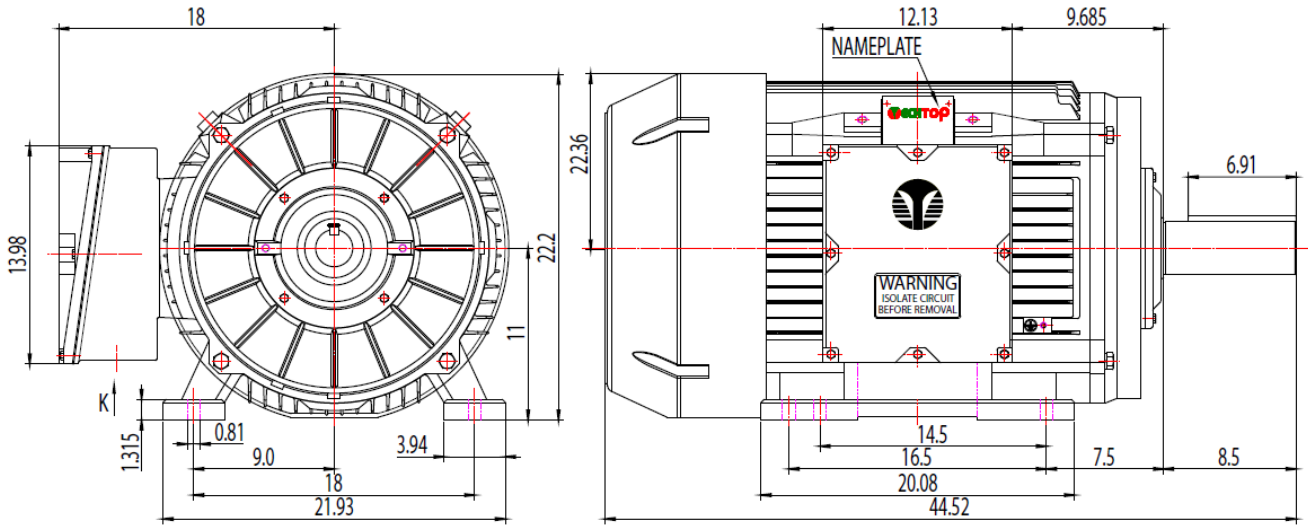
List Price --


All data shown at HIGH voltage setting

Format STD 3 Phase

Electrical Data				General Data	
Rated Motor Output Power	125 HP			Frame Size	444
Rated Motor Speed	1785 r/min			Enclosure	TEFC
Rated Motor Voltage (3 Phase)	460-60 Volts - HZ			Approximate Weight	--
Rated Motor Current	276/138 Amps			NEMA Design	C
Service Factor	1.15			IP Rating	55
KVA Code	K			Insulation Class	F
Nominal Efficiency	95.4 %			Tropicalization	YES
Nominal Power Factor	0.89 cosθ			Duty	Cont.
Full Load Torque Ft-Lb	365.40704 Ft-Lb			Cable Entry	1.25
Temp Rise @ Full Load °C	72.5			Feet Removable	YES
Efficiency Level	IE3 - NEMA Premium			Double Drilled	NO
Load Data	RPM	Trq %FL	Current Amps	Rated Ambient (°C)	40
Locked Rotor	-	197	1260	Rated Altitude (M)	1000
Breakdown	-	185	-	Coating	7024 - Graphite Grey
Pull Up	-	89	-	Shaft Grounding	NO
125% of FL	1781	-	174	Brake Voltage (DC)	--
75% of FL	1790	-	103.68	Brake Torque (N-M)	--
50% of FL	1793	-	73.63	Mechanical Data	
No Load	--	-	33.66	Bearing DE Side	6319 C3
Hazardous Location	CL/II Div2 Grp C,D/F,G			Bearing NDE Side	6319 C3
				Moment of Inertia	-- kg.m2
				Noise Level	Per NEMA dB (A)
CT VFD Range		--		Loaded Torque Curves	
				P1 = INPUT POWER (KW), S = Slip (% of Sync RPM), η = Efficiency (%), cosφ = Power Factor	
Certifications	UL	CSA	DOE		
File Numbers	323353	224693	096A		
Wiring Diagram	3PH 12 Lead Dual Voltage				
<p style="text-align: center;">Techtop Industries -2815 Colonnades Court - Peachtree Corners, GA 30071 - Phone: (678) 436-5540</p>					

Model Number	OX3-CI-TF-444T-4-RR-E-125-460-60
MFG PN	T444T125U4B
List Price	--
Base Frame	OX-444T-CI-TF



 Shanghai HIMAK Electrical Machinery CO., LTD		NEMA TEFC 444-445T	
Design	Standard	NO:	TXC 444-445T CFC
Checker	Allow	STEP MARK	1:4 SORT Cast iron Motor
Auditing	Date		