



Model Number GX3-CI-TF-449T-6-RR-E-250-460-60

MFG PN T449T250U6B

List Price --

All data shown at HIGH voltage setting

Format STD 3 Phase

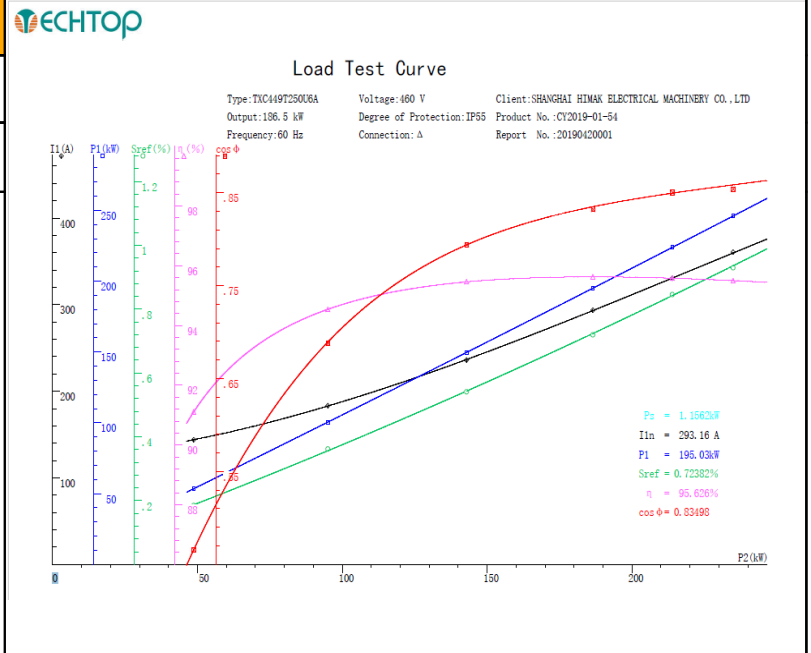
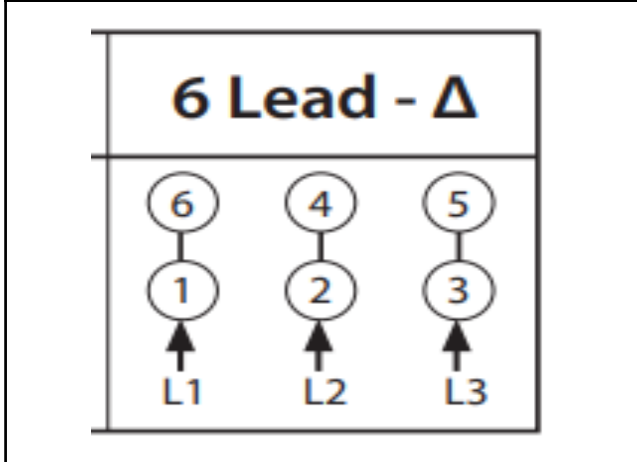
Electrical Data		General Data	
Rated Motor Output Power	250 HP	Frame Size	449
Rated Motor Speed	-- r/min	Enclosure	TEFC
Rated Motor Voltage (3 Phase)	460-60 Volts - HZ	Approximate Weight	2578
Rated Motor Current	-- Amps	NEMA Design	A
Service Factor	1.15	IP Rating	55
KVA Code	--	Insulation Class	F
Nominal Efficiency	-- %	Tropicalization	YES
Nominal Power Factor	-- cosθ	Duty	cont
Full Load Torque Ft-Lb	1102 Ft-Lb	Cable Entry	1.25
Temp Rise @ Full Load °C	65	Feet Removable	YES
Efficiency Level	IE3 - NEMA Premium	Double Drilled	NO

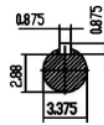
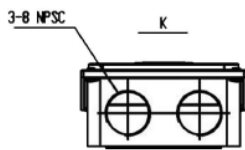
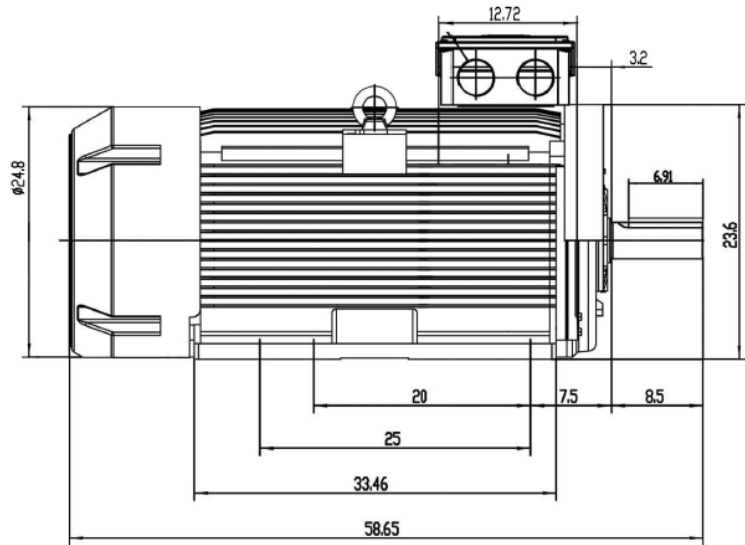
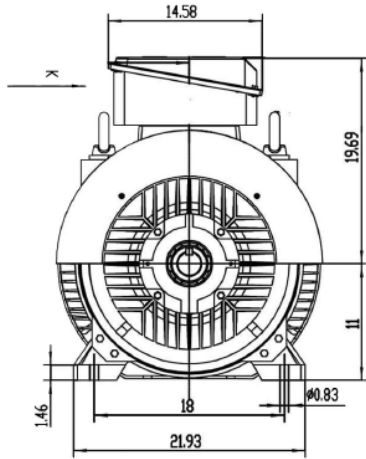
Load Data	RPM	Trq %FL	Current Amps	Mechanical Data	
Locked Rotor	-	215	2769	Rated Ambient (°C)	40
Breakdown	-	182	-	Rated Altitude (M)	1000
Pull Up	-	301	-	Coating	7024 - Graphite Grey
125% of FL	1189	-	357	Shaft Grounding	YES
75% of FL	1194	-	233	Brake Voltage (DC)	--
50% of FL	1196	-	181.2	Brake Torque (N-M)	--
No Load	--	-	--		


Hazardous Location	Class 1, Div 2 Grp A,B,C,D			Bearing DE Side	--
				Bearing NDE Side	--
				Moment of Inertia	-- kg.m2
				Noise Level	Per NEMA dB (A)

CT VFD Range	--	Loaded Torque Curves	
P1 = INPUT POWER (KW), S = Slip (% of Sync RPM), η = Efficiency (%), cosφ = Power Factor			

Certifications	UL	CSA	DOE
File Numbers	323353	224693	096A
Wiring Diagram	3Phase 6 Lead		





 Shanghai HIMAK Electrical Machinery CO.,LTD		NEMA TFCL 449T	
Design	Standard	NO:	CY226.A16.002
Checker	Allow	STEP MARK	1:8
Auditing	Date	SORT	Cast Iron Motor