



Model Number GX3-AL-TF-284TC-4-B-D-25-230|460-60

MFG PN T284T25U4B

List Price --

All data shown at HIGH voltage setting

Format STD 3 Phase

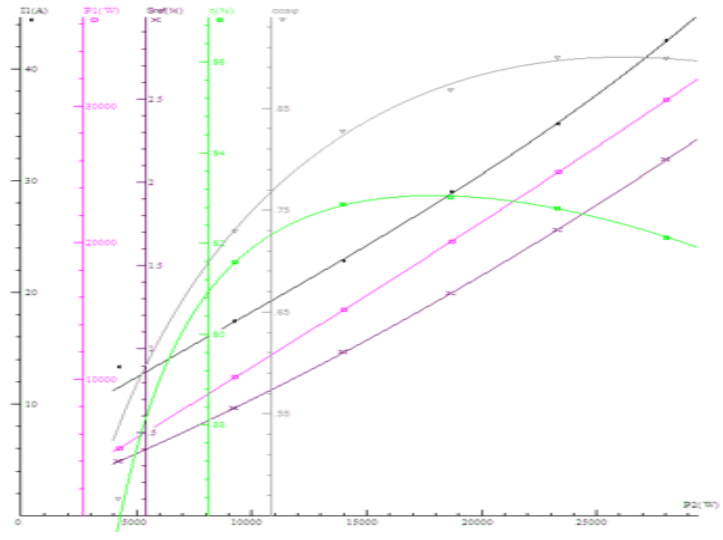
Electrical Data		General Data	
Rated Motor Output Power	25 HP	Frame Size	284
Rated Motor Speed	1770 r/min	Enclosure	TEFC
Rated Motor Voltage (3 Phase)	230 460-60 Volts - HZ	Approximate Weight	310.2
Rated Motor Current	57.0/28.5 Amps	NEMA Design	A
Service Factor	1.25	IP Rating	55
KVA Code	K	Insulation Class	F
Nominal Efficiency	93.6 %	Tropicalization	YES
Nominal Power Factor	0.87 cosθ	Duty	Cont.
Full Load Torque Ft-Lb	73.76 Ft-Lb	Cable Entry	1.25
Temp Rise @ Full Load °C	50.7	Feet Removable	YES
Efficiency Level	IE3 - NEMA Premium	Double Drilled	NO

Load Data	RPM	Trq %FL	Current Amps	Mechanical Data	
Locked Rotor	-	283	269	Rated Ambient (°C)	40
Breakdown	-	350	-	Rated Altitude (M)	1000
Pull Up	-	206	-	Coating	7024 - Graphite Grey
125% of FL	1769	-	35	Shaft Grounding	Yes
75% of FL	1782	-	22.92	Brake Voltage (DC)	--
50% of FL	1788	-	17.43	Brake Torque (N-M)	--
No Load	--	-	11.63		

Hazardous Location	Class 1, Div 2, Grp A,B,C,D			Bearing DE Side	6311 C3
				Bearing NDE Side	6311 C3
				Moment of Inertia	-- kg.m2
				Noise Level	Per NEMA dB (A)

CT VFD Range	--	Loaded Torque Curves	--
P1 = INPUT POWER (KW), S = Slip (% of Sync RPM), η = Efficiency (%), cosφ = Power Factor			

Certifications	UL	CSA	DOE
File Numbers	323353	224693	096A
Wiring Diagram	3PH 12 Lead Dual Voltage		



FRAME: 280TC | HP: | RPM: | PHASE: 3 | VOLT: 208-230/460V | ENCL: TEFC | FREQ: 60 Hz | FLA: | LRA:

