



Model Number GR3-CI-TF-447T-4-RR-E-200-460-60

MFG PN T447T200U4B

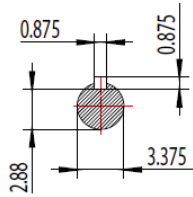
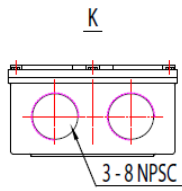
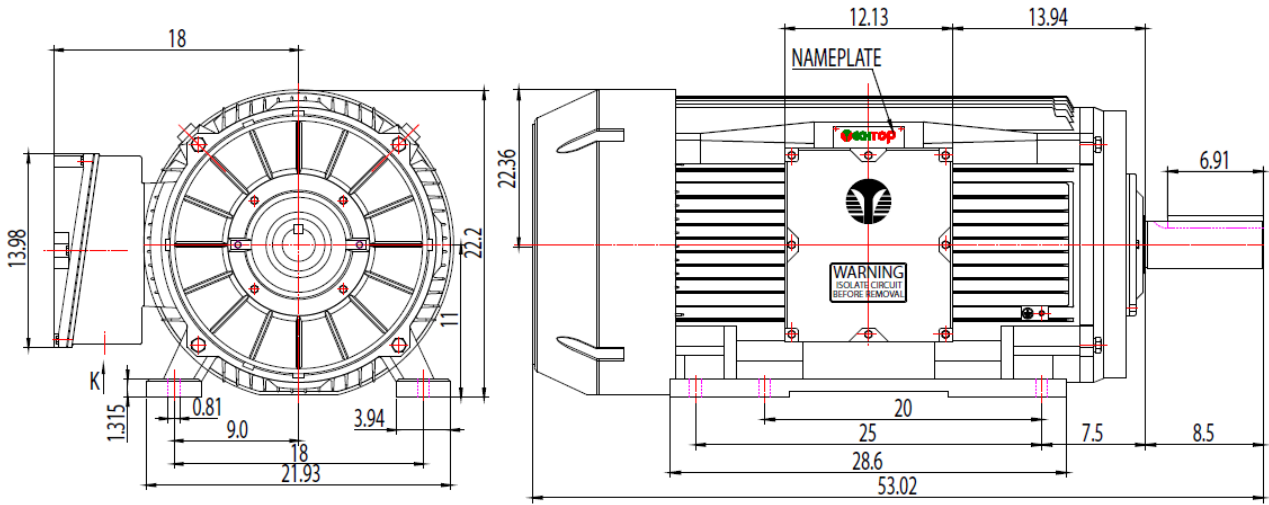
List Price --


All data shown at HIGH voltage setting

Format STD 3 Phase

Electrical Data				General Data	
Rated Motor Output Power	200 HP			Frame Size	447
Rated Motor Speed	1785 r/min			Enclosure	TEFC
Rated Motor Voltage (3 Phase)	460-60 Volts - HZ			Approximate Weight	2050
Rated Motor Current	434/217 Amps			NEMA Design	A
Service Factor	1.15			IP Rating	55
KVA Code	K			Insulation Class	F
Nominal Efficiency	96.2 %			Tropicalization	YES
Nominal Power Factor	0.9 cosθ			Duty	Cont.
Full Load Torque Ft-Lb	293.196 Ft-Lb			Cable Entry	1.25
Temp Rise @ Full Load °C	88.5			Feet Removable	YES
Efficiency Level	IE3 - NEMA Premium			Double Drilled	NO
Load Data	RPM	Trq %FL	Current Amps	Rated Ambient (°C)	40
Locked Rotor	-	260	1958	Rated Altitude (M)	1000
Breakdown	-	424	-	Coating	7024 - Graphite Grey
Pull Up	-	22	-	Shaft Grounding	NO
125% of FL	1781	-	287.3	Brake Voltage (DC)	--
75% of FL	1788	-	188.32	Brake Torque (N-M)	--
50% of FL	1792	-	132.79	Mechanical Data	
No Load	1800	-	61.44	Bearing DE Side	NU 319
Hazardous Location	Class 1, Div 2, Grp A,B,C,D			Bearing NDE Side	6319 C3
				Moment of Inertia	-- kg.m2
				Noise Level	Per NEMA dB (A)
CT VFD Range		--		Loaded Torque Curves	
				P1 = INPUT POWER (KW), S = Slip (% of Sync RPM), η = Efficiency (%), cosφ = Power Factor	
Certifications	UL	CSA	DOE		
File Numbers	323353	224693	096A		
Wiring Diagram	3PH 12 Lead Dual Voltage				

Model Number	GR3-CI-TF-447T-4-RR-E-200-460-60
MFG PN	T447T200U4B
List Price	--
Base Frame	GR-447T-CI-TF



 ShangHai HIMAK Electrical Machinery CO.,LTD		NEMA TEFC 447-449T	
Design	Standard	NO:	TXC 447-449T CFC
Checker	Allow	STEP MARK	1:4.5 SORT Cast iron Motor
Auditing	Date		