



Model Number GR3-CI-TF-444T-4-RR-E-125-460-60

MFG PN T444T125U4B

List Price --

All data shown at HIGH voltage setting

Format STD 3 Phase

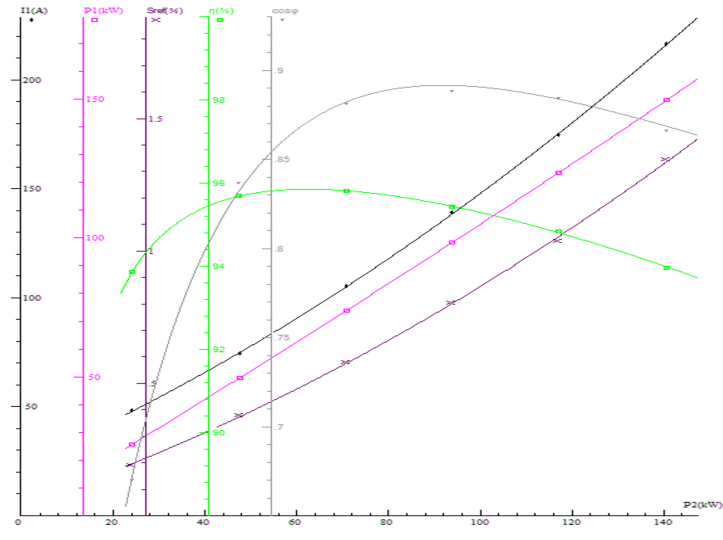
Electrical Data		General Data	
Rated Motor Output Power	125 HP	Frame Size	444
Rated Motor Speed	1785 r/min	Enclosure	TEFC
Rated Motor Voltage (3 Phase)	460-60 Volts - HZ	Approximate Weight	1476.2
Rated Motor Current	276/138 Amps	NEMA Design	A
Service Factor	1.15	IP Rating	55
KVA Code	H	Insulation Class	F
Nominal Efficiency	95.4 %	Tropicalization	YES
Nominal Power Factor	0.89 cosθ	Duty	Cont.
Full Load Torque Ft-Lb	365.40704 Ft-Lb	Cable Entry	1.25
Temp Rise @ Full Load °C	72.5	Feet Removable	YES
Efficiency Level	IE3 - NEMA Premium	Double Drilled	NO

Load Data	RPM	Trq %FL	Current Amps	Mechanical Data	
Locked Rotor	-	197	1260	Bearing DE Side	6319 C3
Breakdown	-	185	-	Bearing NDE Side	6319 C3
Pull Up	-	89	-	Moment of Inertia	-- kg.m2
125% of FL	1781	-	174	Noise Level	Per NEMA dB (A)
75% of FL	1790	-	103.68		
50% of FL	1793	-	73.63		
No Load	--	-	33.66		

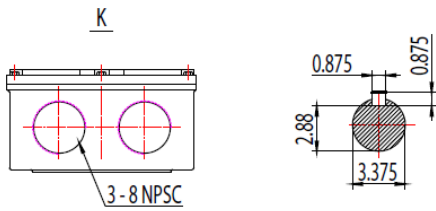
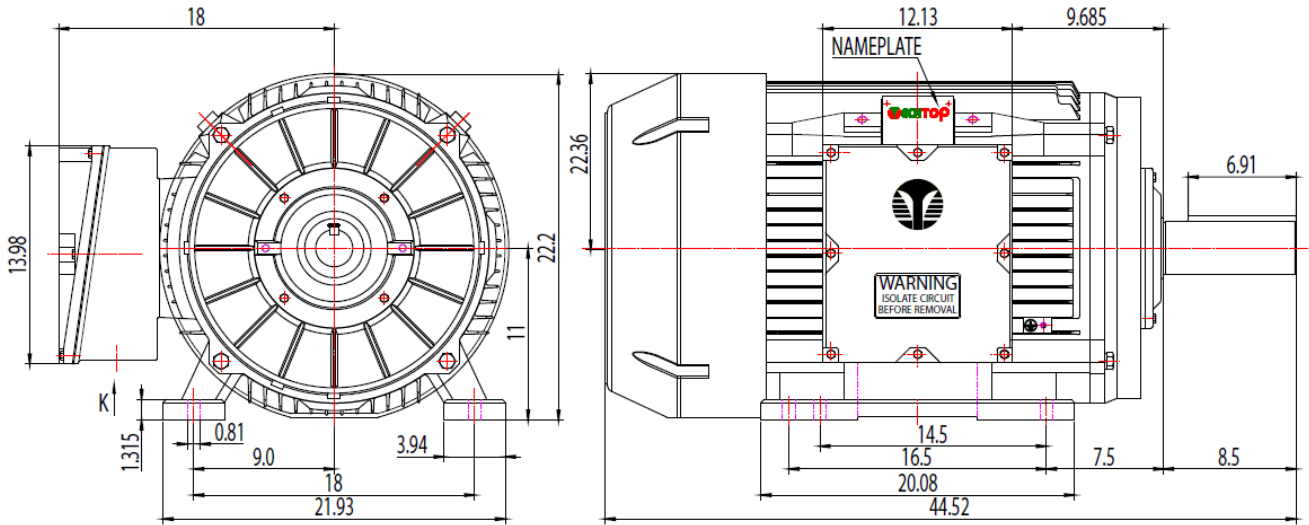
Hazardous Location	Class 1, Div 2, Grp A,B,C,D		Rated Ambient (°C)	40
--------------------	-----------------------------	--	--------------------	----


CT VFD Range	--	Loaded Torque Curves		--
P1 = INPUT POWER (KW), S = Slip (% of Sync RPM), η = Efficiency (%), cosφ = Power Factor				

Certifications	UL	CSA	DOE
File Numbers	323353	224693	096A
Wiring Diagram	3PH 12 Lead Dual Voltage		



Model Number	GR3-CI-TF-444T-4-RR-E-125-460-60
MFG PN	T444T125U4B
List Price	--
Base Frame	GR-444T-CI-TF



 Shanghai HIMAK Electrical Machinery CO., LTD		NEMA TEFC 444-445T	
Design	Standard	NO:	TXC 444-445T CFC
Checker	Allow	STEP MARK	1:4 SORT Cast iron Motor
Auditing	Date		