



Model Number GR3-CI-TF-365TS-2-BR-D-75-230|460-60

MFG PN T365TS75U2B

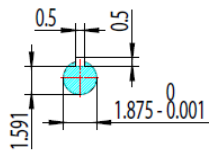
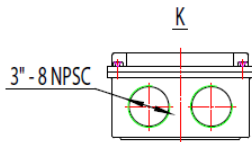
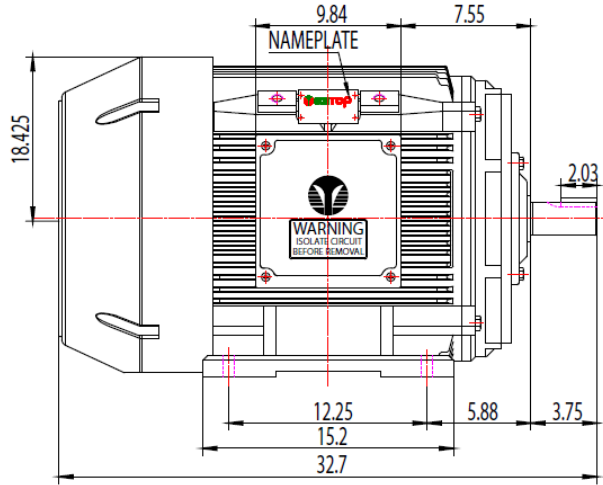
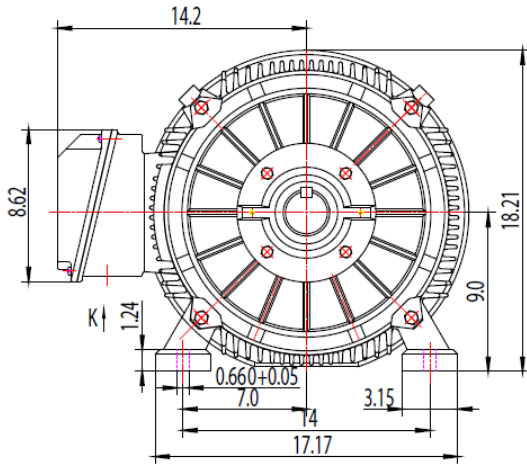
List Price --


All data shown at HIGH voltage setting

Format STD 3 Phase

Electrical Data				General Data	
Rated Motor Output Power	75 HP			Frame Size	365
Rated Motor Speed	3560 r/min			Enclosure	TEFC
Rated Motor Voltage (3 Phase)	230 460-60 Volts - HZ			Approximate Weight	832.7
Rated Motor Current	164.8/82.4 Amps			NEMA Design	A
Service Factor	1.15			IP Rating	55
KVA Code	G			Insulation Class	F
Nominal Efficiency	93.6 %			Tropicalization	YES
Nominal Power Factor	0.91 cosθ			Duty	Cont.
Full Load Torque Ft-Lb	109.1648 Ft-Lb			Cable Entry	1.25
Temp Rise @ Full Load °C	59.4			Feet Removable	YES
Efficiency Level	IE3 - NEMA Premium			Double Drilled	NO
Load Data	RPM	Trq %FL	Current Amps	Rated Ambient (°C)	40
Locked Rotor	-	288	700.9	Rated Altitude (M)	1000
Breakdown	-	286	-	Coating	7024 - Graphite Grey
Pull Up	-	150	-	Shaft Grounding	NO
125% of FL	3552	-	100.74	Brake Voltage (DC)	--
75% of FL	3573	-	61.34	Brake Torque (N-M)	--
50% of FL	3582	-	43.83	Mechanical Data	
No Load	3596	-	20.15	Bearing DE Side	6313 C3
Hazardous Location	Class 1, Div 2, Grp A,B,C,D			Bearing NDE Side	6313 C3
				Moment of Inertia	-- kg.m2
				Noise Level	Per NEMA dB (A)
CT VFD Range		--		Loaded Torque Curves	
				P1 = INPUT POWER (KW), S = Slip (% of Sync RPM), η = Efficiency (%), cosφ = Power Factor	
Certifications	UL	CSA	DOE		
File Numbers	323353	224693	096A		
Wiring Diagram	3PH 12 Lead Dual Voltage				
<p style="text-align: center;">DELTA RUN CONNECTIONS</p> <p>The diagram shows four Delta Run connection schemes for a 3-phase motor with 12 leads (1-12):</p> <ul style="list-style-type: none"> 230V RUN: Leads 1, 2, 3 are connected to a common bus; leads 4, 5, 6 are connected to another common bus; leads 7, 8, 9 are connected to a third common bus; leads 10, 11, 12 are connected to a fourth common bus. 460V RUN: Leads 1, 2, 3 are connected to a common bus; leads 4, 5, 6 are connected to another common bus; leads 7, 8, 9 are connected to a third common bus; leads 10, 11, 12 are connected to a fourth common bus. 398V RUN: Leads 1, 2, 3 are connected to a common bus; leads 4, 5, 6 are connected to another common bus; leads 7, 8, 9 are connected to a third common bus; leads 10, 11, 12 are connected to a fourth common bus. 796V RUN: Leads 1, 2, 3 are connected to a common bus; leads 4, 5, 6 are connected to another common bus; leads 7, 8, 9 are connected to a third common bus; leads 10, 11, 12 are connected to a fourth common bus. 					
Techtop Industries -2815 Colonnades Court - Peachtree Corners, GA 30071 - Phone: (678) 436-5540					

Model Number	GR3-CI-TF-365TS-2-BR-D-75-230 460-60
MFG PN	T365TS75U2B
List Price	--
Base Frame	GR-365TS-CI-TF



 ShangHai HIMAK Electrical Machinery CO.,LTD			NEMA TEFC 365TS			
			NO:	TXC 365TS CFC		
Design	Yang	Standard	STEP MARK	1:5	SORT	Cast iron Motor
Checker	01.06.2016	Allow				
Auditing		Date				