



Model Number GR3-CI-TF-326TS-2-BR-D-50-230|460-60

MFG PN TFC326TS50U2B

List Price --

All data shown at HIGH voltage setting

Format STD 3 Phase

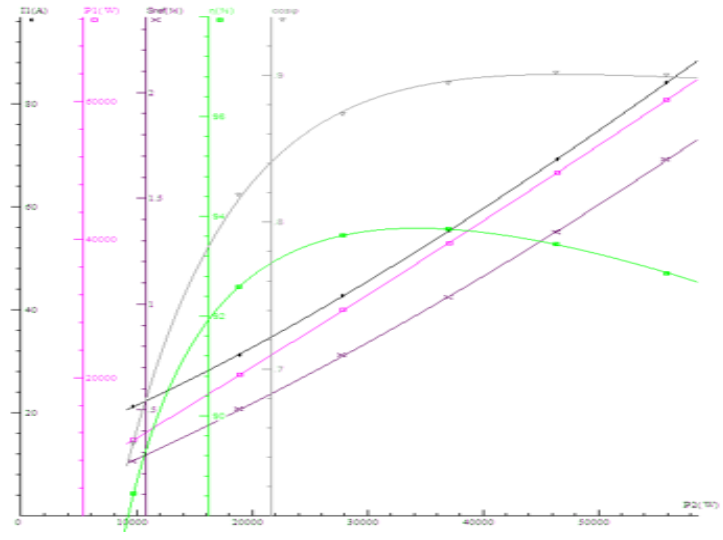
Electrical Data		General Data	
Rated Motor Output Power	50 HP	Frame Size	326
Rated Motor Speed	3560 r/min	Enclosure	TEFC
Rated Motor Voltage (3 Phase)	230 460-60 Volts - HZ	Approximate Weight	527
Rated Motor Current	111.8/55.9 Amps	NEMA Design	A
Service Factor	1.25	IP Rating	55
KVA Code	J	Insulation Class	F
Nominal Efficiency	93 %	Tropicalization	YES
Nominal Power Factor	0.9 cosθ	Duty	Cont.
Full Load Torque Ft-Lb	74.1288 Ft-Lb	Cable Entry	1.25
Temp Rise @ Full Load °C	63.3	Feet Removable	YES
Efficiency Level	IE3 - NEMA Premium	Double Drilled	NO

Load Data	RPM	Trq %FL	Current Amps	Mechanical Data	
Locked Rotor	-	306	467.4	Bearing DE Side	6312 C3
Breakdown	-	304	-	Bearing NDE Side	6312 C3
Pull Up	-	173	-	Moment of Inertia	kg.m2
125% of FL	3551	-	69.5	Noise Level	Per NEMA dB (A)
75% of FL	3573	-	42.81		
50% of FL	3582	-	31		
No Load		-	15.79		

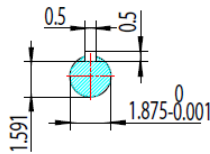
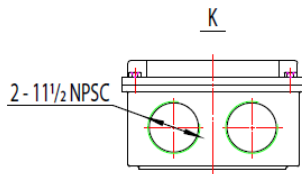
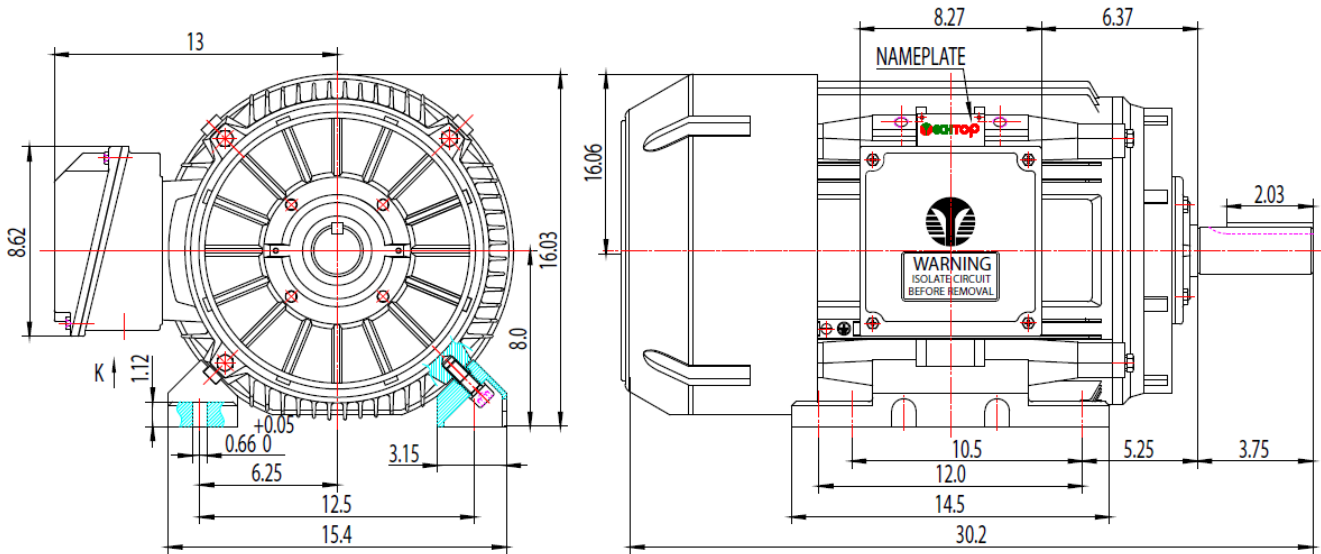
Hazardous Location	Class 1, Div 2, Grp A,B,C,D		Rated Ambient (°C)	40
--------------------	-----------------------------	--	--------------------	----


CT VFD Range	--	Loaded Torque Curves		--
P1 = INPUT POWER (KW), S = Slip (% of Sync RPM), η = Efficiency (%), cosφ = Power Factor				

Certifications	UL	CSA	DOE
File Numbers	323353	224693	096A
Wiring Diagram	3PH 12 Lead Dual Voltage		



Model Number	GR3-CI-TF-326TS-2-BR-D-50-230 460-60
MFG PN	TFC326TS50U2B
List Price	--
Base Frame	GR-326TS-CI-TF



 ShangHai HIMAK Electrical Machinery CO.,LTD			TEFC 326TS			
			NO:	TXCR 326TS CFC		
Design	Yang	Standard	STEP MARK	1:4	SORT	Cast iron Motor
Checker	01.04.2016	Allow				
Auditing		Date				