



Model Number BK3-CI-TF-286T-6-BR-G-20-230|460-60

MFG PN TFC286T20U6B

List Price --

All data shown at HIGH voltage setting

Format | STD 3 Phase

Electrical Data		General Data	
Rated Motor Output Power	20 HP	Frame Size	286
Rated Motor Speed	1115 r/min	Enclosure	TEFC
Rated Motor Voltage (3 Phase)	230 460-60 Volts - HZ	Approximate Weight	413.6
Rated Motor Current	49.6/24.8 Amps	NEMA Design	--
Service Factor	1.15	IP Rating	55
KVA Code	F	Insulation Class	F
Nominal Efficiency	86.4 %	Tropicalization	YES
Nominal Power Factor	88 cosθ	Duty	Cont.
Full Load Torque Ft-Lb	94 Ft-Lb	Cable Entry	1.25
Temp Rise @ Full Load °C	--	Feet Removable	YES
Efficiency Level	IE3 - NEMA Premium	Double Drilled	NO

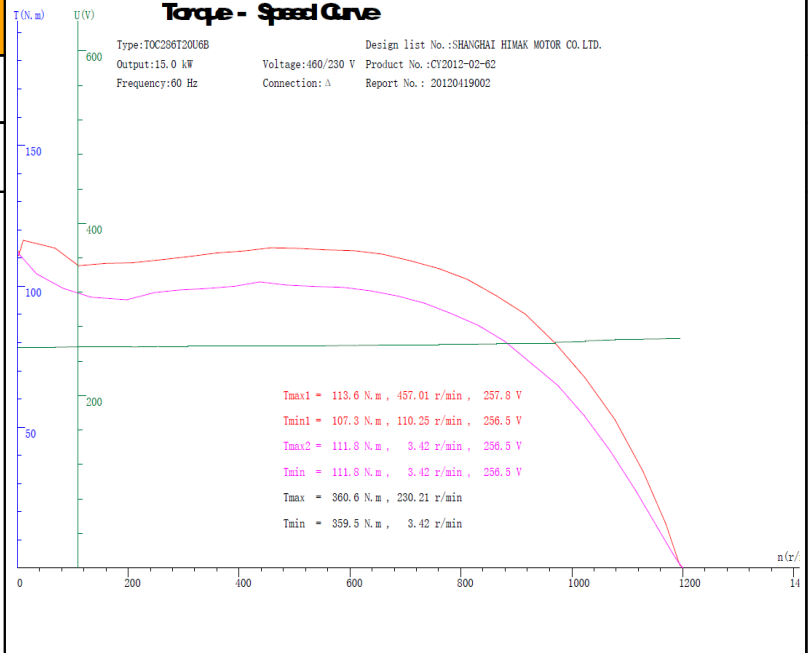
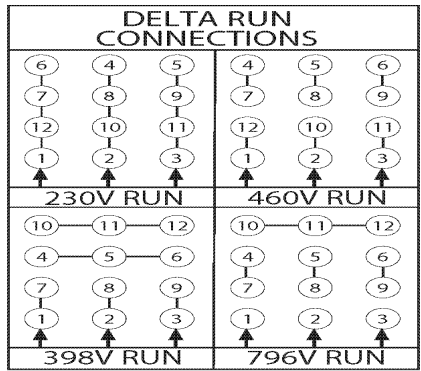
Load Data	RPM	Trq %FL	Current Amps	Mechanical Data	
Locked Rotor	-	305	--	Rated Ambient (°C)	40
Breakdown	-	270	-	Rated Altitude (M)	1000
Pull Up	-	180	-	Coating	7024 - Graphite Grey
125% of FL	1085	-	31.6	Shaft Grounding	NO
75% of FL	1141	-	18.7	Brake Voltage (DC)	--
50% of FL	1162	-	13.7	Brake Torque (N-M)	--
No Load	--	-	8.8		

Hazardous Location	CL/II Div2 Grp C,D/F,G			Bearing DE Side	6311 C3
				Bearing NDE Side	6311 C3
				Moment of Inertia	-- kg.m2
				Noise Level	Per NEMA dB (A)

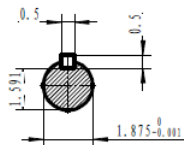
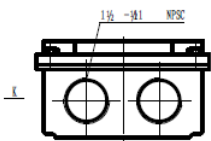
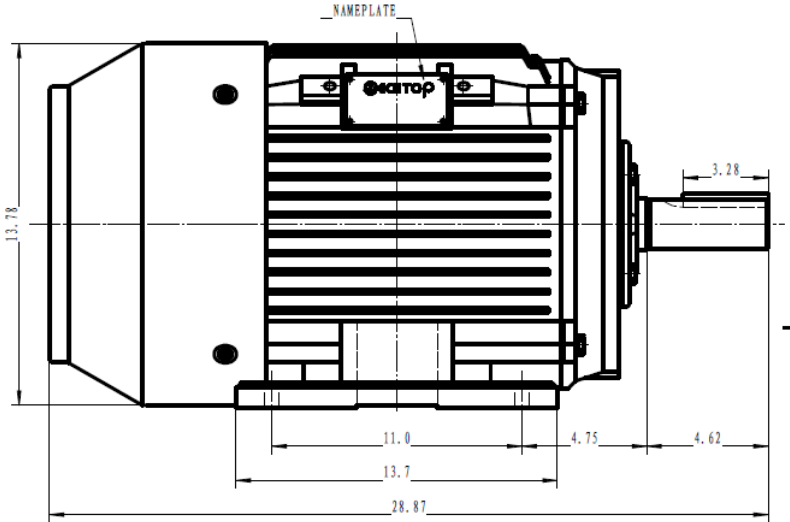
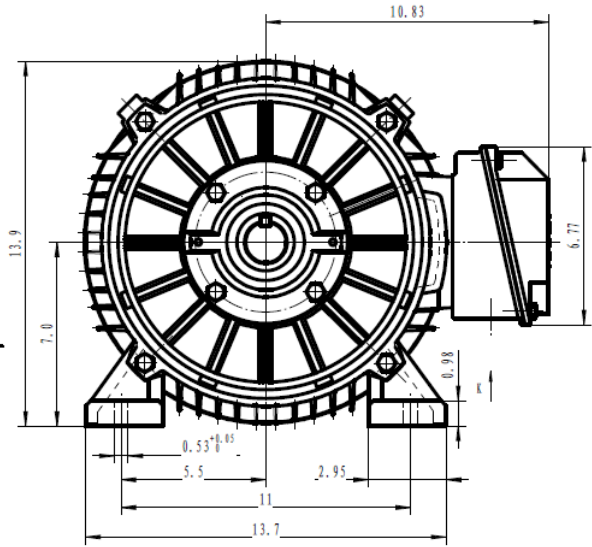
CT VFD Range	--	Loaded Torque Curves	--
P1 = INPUT POWER (KW), S = Slip (% of Sync RPM), η = Efficiency (%), cosφ = Power Factor			


Certifications	UL	CSA	DOE
File Numbers	323353	224693	096A

Wiring Diagram 3PH 12 Lead Dual Voltage



Model Number	BK3-CI-TF-286T-6-BR-G-20-230 460-60
MFG PN	TFC286T20U6B
List Price	--
Base Frame	BK-286T-CI-TF



 Shanghai HIMAK Electrical Machinery CO., LTD		NEMA TEFC 286T	
		NO:	TFC286T20U6B
Design	Standard	STEP MARK	1:3.5 SORT Cast iron Motor
Checker	Allow		
Auditing	Date		