



Model Number BK3-CI-TF-284T-6-BR-G-15-230|460-60

MFG PN TFC284T15U6B

List Price --

All data shown at HIGH voltage setting

Format | STD 3 Phase

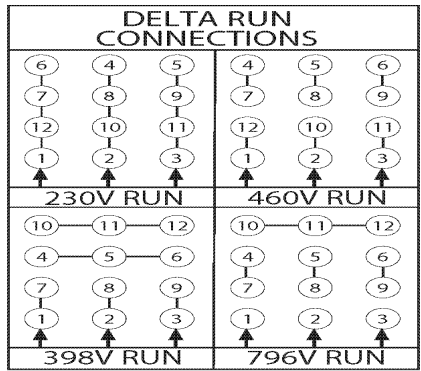
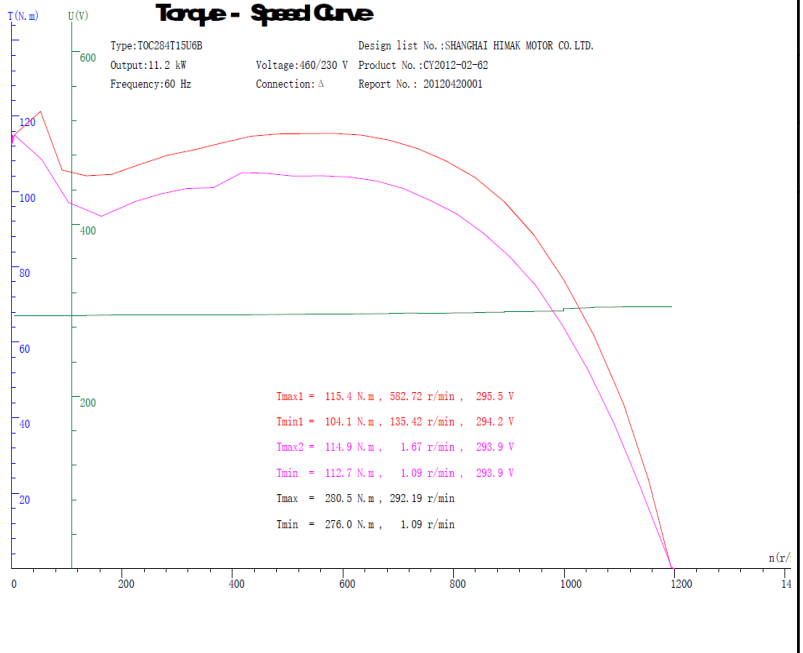
Electrical Data		General Data	
Rated Motor Output Power	15 HP	Frame Size	284
Rated Motor Speed	1139 r/min	Enclosure	TEFC
Rated Motor Voltage (3 Phase)	230 460-60 Volts - HZ	Approximate Weight	363
Rated Motor Current	38.2/19.1 Amps	NEMA Design	--
Service Factor	1.15	IP Rating	55
KVA Code	G	Insulation Class	F
Nominal Efficiency	87.7 %	Tropicalization	YES
Nominal Power Factor	84 cosθ	Duty	Cont.
Full Load Torque Ft-Lb	69.06 Ft-Lb	Cable Entry	1.25
Temp Rise @ Full Load °C	--	Feet Removable	YES
Efficiency Level	IE3 - NEMA Premium	Double Drilled	NO

Load Data	RPM	Trq %FL	Current Amps	Mechanical Data	
Locked Rotor	-	287	--	Bearing DE Side	6311 C3
Breakdown	-	254	-	Bearing NDE Side	6311 C3
Pull Up	-	198	-	Moment of Inertia	-- kg.m2
125% of FL	1099	-	24.2	Noise Level	Per NEMA dB (A)
75% of FL	1148	-	14.7		
50% of FL	1167	-	11.1		
No Load	--	-	7.2		

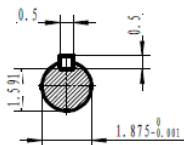
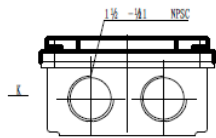
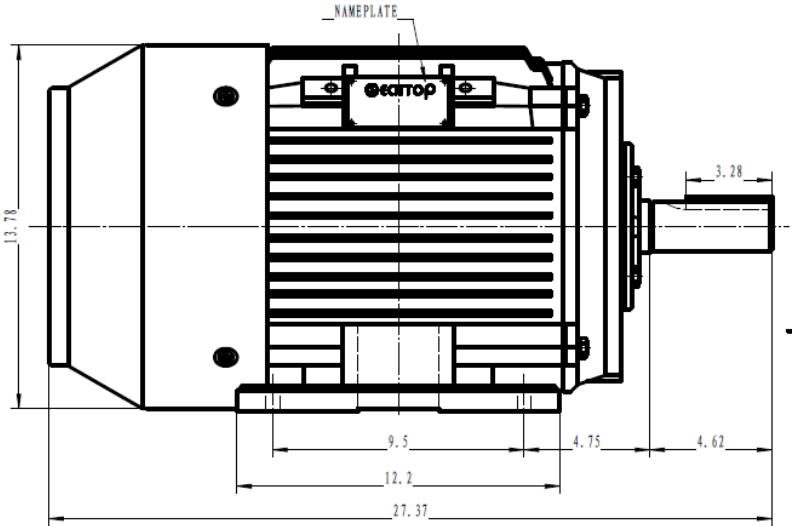
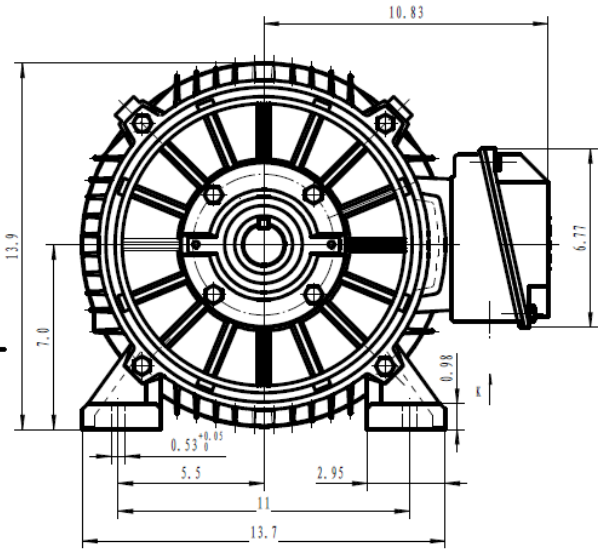
Hazardous Location	CL/II Div2 Grp C,D/F,G			Loaded Torque Curves		--		
				P1 = INPUT POWER (KW), S = Slip (% of Sync RPM), η = Efficiency (%), cosφ = Power Factor				
				Bearing DE Side		6311 C3		
				Bearing NDE Side		6311 C3		


CT VFD Range		--	
--------------	--	----	--

Certifications	UL	CSA	DOE
File Numbers	323353	224693	096A
Wiring Diagram	3PH 12 Lead Dual Voltage		



Model Number	BK3-CI-TF-284T-6-BR-G-15-230 460-60
MFG PN	TFC284T15U6B
List Price	--
Base Frame	BK-284T-CI-TF



 Shanghai HIMAK Electrical Machinery CO., LTD		NEMA TEFC 284T	
		NO:	TFC284T15U6B
Design	Standard	STEP MARK	1:3.5
Checker	Allow	SORT Cast iron Motor	
Auditing	Date		